

Commodity Supplemental Food Program

For low-income qualifying seniors over 60. Call **WestCap** at 715-977-1167 to learn more.



Qualified seniors aged 60+ have access to food resources including:

- * **Farmers Market Nutrition Program** to purchase produce at certified vendors from June to October.
- * Hot, nutritious meals at **Senior Dining Sites** throughout the county.
- * **Meal delivery** if unable to visit dining sites, cook for themselves or have someone else prepare meals for them.

ADRC of Pierce County: (715) 273-6780



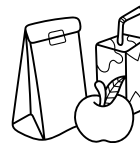
- * Wholesome foods for pregnant women, new moms, infants & children under 5
- * Breastfeeding support
- * Nutrition & feeding tips for families
- * Farmers Market Program vouchers for produce at certified vendors from June to October.

Pierce-Pepin WIC: 715-273-6758
wicmomstrong.com

School Resources

* Free or Reduced School Meals

Free or reduced price school breakfast and lunch are available to low income families. WIC families and children in households receiving FoodShare benefits can get free meals that meet nutrition requirements set by the federal government. **Contact your school's office for information.**



* Backpack Program



Eligible students receive a backpack of food on Fridays for the weekend in some schools. **Contact school nurse for more information.**

Learn about additional statewide food, nutrition & health programs at www.access.wisconsin.gov. Contact FoodShare Outreach Specialist Michelle Dudar-Sehr at 715-629-5405 for screening and application assistance.

Please read the USDA Nondiscrimination Statement at go.wisc.edu/4ys8le or by using the QR code.



To update information in this community food resource directory, call 715-531-1930
Email Katie.Bartko@wisc.edu or Laura.Hinz@wisc.edu.

Visit Pierce.Extension.wisc.edu/nutrition-education/food-resources



FoodWise education is funded by the USDA Supplemental Nutrition Assistance Program- SNAP and Expanded Food and Nutrition Education Program - EFNEP.

An EEO/AA employer, University of Wisconsin-Madison Division of Extension provides equal opportunities in employment and programming, including Title VI, Title IX, the Americans with Disabilities Act (ADA) and Section 504 of the Rehabilitation Act.



Pierce County Community Food Resource Directory Fall 2024



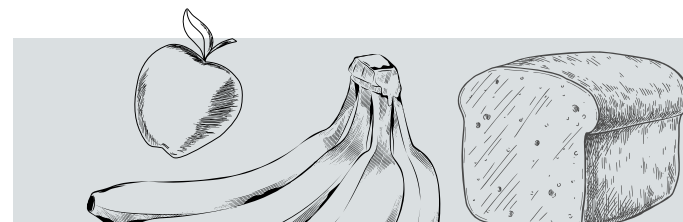
connects you to critical health and human services in your community 24 hours a day, 7 days a week, 365 days a year at no cost to you.

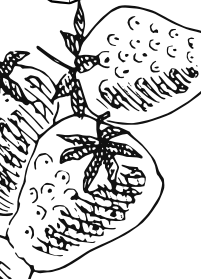
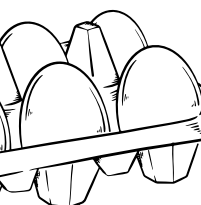
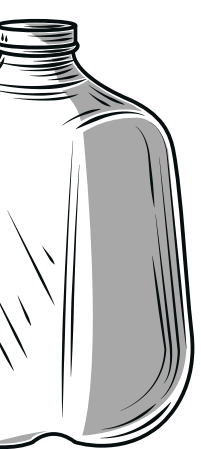
Receive 211 support by

Calling 211 or (877) 947-2211

Texting your zip code to 898211

Visiting 211wisconsin.communityos.org





Use the food pantry in your school district, or the Pierce County Food Pantry.

S = Shop in person C = Curbside pick up

Food Pantry	Address & Phone Contact		Days & hours open					
			Mon.	Tues.	Wed.	Thurs.	Fri.	Sat.
Elmwood Food Pantry	108 S. Main St Elmwood, WI	715-639-2307 Open 1st and 3rd Tuesdays, 4th Saturday of the month		3-6p (1st) C 9-11a (3rd) C				9-11a (4th) C
Pierce County Food Pantry	440 N Maple St Ellsworth, WI	715-273-2070 Welcomes all in the county	3-6p C	9:30a- 12p C	3-6p C	9:30a- 12p C		
Plum City Food Pantry	301 1st St Plum City, WI	715-647-2191				10a-2p C	2nd Thurs: 3-7p C	
Prescott Area Food Pantry	911 Pearl St Prescott, WI	715-262-4143 Open 3rd Saturday of the month		1-4p S	10a-1p S	11-4p S		10a-12p (3rd) S
River Falls Community Pantry	705 St Croix St River Falls, WI	715-425-6880	10a-12p S 6-7:30p S	1-5p S	6- 7:30p S	10a- 12p S		
Spring Valley Community Food Pantry	S425 Church Ave Spring Valley, WI	715-778-5988 Open 2nd and 4th Wednesdays, 4th Saturday of the month			10-11:30a 4:30-6:30p 2nd & 4th C		10-11:30a (4th) S	
Susan's Food Pantry Spirit of Grace Church	127 S. Second St River Falls, WI	715-425-6233	1-4p S	10a-1p S	1-4p S	10a-1p S	10a-1p S	

Free Community Meals

Servant of the Shepherd Church
103 N. 4th St, River Falls
Most Sundays at 12:15pm
Food pantry open 7-5p daily

St. Paul's UCC Church
W5706 State Road 72, Ellsworth 3rd
Tuesday 5-6:30p spuccellsworth.org

Spirit of Grace Church
127 S. Second St., River Falls
2nd Saturday 8-10a



For emergency food needs, call 715-307-4510. An operator can connect you to volunteers in the area.



National Guard Armory, New Richmond
1245 Cty Hwy CC (Wall St)
Distribution 3rd Thursday, 5-7p
Sponsored by Faith Community Church

\$25 suggested donation for large share of grocery items. **All are welcome.** There are no requirements based on income, home address or immigration status to participate. Rubyspantry.org for more information.

Pierce Pepin Cooperative, Ellsworth
W7725 US Hwy 10
Distribution 1st Saturday, 9:30-11a
Sponsored by Bethel Covenant Church