



# NATIONAL 4-H WEEK

## #Opportunity4All

### PIERCE COUNTY 4-H INFORMANT ~ OCTOBER 2022



UW-MADISON EXTENSION  
PIERCE COUNTY

#### **Pierce County Staff**

**Kristen Bruder— Interim Area 5 Director**

**Vacant - 4-H Program Educator**

**Hannah White-McGinn -Human  
Development & Relationships Educator**

**Michael Geissing—Crops Educator**

**Ryan Sterry—Dairy Educator**

**Diana Alfuth-Horticulture Outreach Specialist**

**Katie Bartko-FoodWise Nutrition Coordinator**

**Karen Frantti—Nutrition Educator**

**April Daniels—Outreach Support Specialist**

**Beth McIlquham— 4-H Support Staff**

432 W. Main Street

PO Box 69

Courthouse Annex

Ellsworth, WI 54011

715-273-6781

<https://pierce.extension.wisc.edu/>



#### **PIERCE COUNTY 4-H LEADERS COUNCIL**

The Pierce County 4-H Leaders Council Committee is an Important Group for the Pierce County 4-H Program. This Committee Oversees the 4-H Program and Makes Important Decisions About How and Where the Financial Resources of the 4-H Program Are Spent. They Also Provide Direction for The Educational Programs. *We still need Adult and Youth Members as Representatives.* Youth Have an Equal Voice at The Table. The Committee Meets Four Times a Year. NEXT MEETING WILL BE IN DECEMBER 2022

#### **WHAT'S UP WITH YOUR CLUB?**

Would you like your Club featured in the next Informant? It's simple! Write up a short article telling us just how fun your club's event was and make sure to include a picture with the names of the members featured. Let us and other clubs know the good work you are doing in the community! To share your club's story please email April at:

[april.daniels@wisc.edu](mailto:april.daniels@wisc.edu)

October 2 - 8, 2022

# NATIONAL 4-H WEEK

#Opportunity4ALL  
#Opportunity4All



Stick up a Sign Sunday

Post a 4-H sign in your yard or window



Memory Monday

Share your favorite 4-H memory



Take a Selfie Tuesday

Take a 4-H inspired selfie & share



Wear Green Wednesday

Wear your 4-H or green gear



Thankful Thursday

Tell a volunteer you appreciate them



4-H Friend Friday

Send a nice note to a 4-H friend



Story Saturday

Share your 4-H story with others



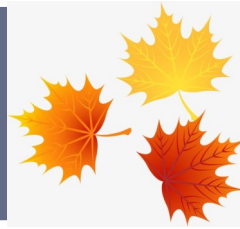
## 4-H IS A COMMUNITY FOR ALL KIDS

In 4-H, we believe in the power of young people. We see that every child has valuable strengths and real influence to improve the world around us.

### What is 4-H?

4-H is delivered by Cooperative Extension—a community of more than 100 public universities across the nation that provides experiences where young people learn by doing. For more than 100 years, 4-H has welcomed young people of all beliefs and backgrounds, giving kids a voice to express who they are and how they make their lives and communities better.

# October 2022



SUN	MON	TUE	WED	THU	FRI	SAT
						<b>1</b> State Dog Show Let Office know of your window display
<b>2</b> State Dog Show	<b>NATIONAL 4-H WEEK #OPPORTUNITY4ALL</b>					<b>8</b> WI Summit for Natural Resources Volunteers
				<b>6</b> WI Summit for Natural Resources Volunteers	<b>7</b> WI Summit for Natural Resources Volunteers	
<b>9</b>	<b>10</b>	<b>11</b>	<b>12</b>	<b>13</b>	<b>14</b>	<b>15</b>
<b>16</b>	<b>17</b>	<b>18</b>	<b>19</b>	<b>20</b>	<b>21</b> WI 4-H Arts Camp	<b>22</b> WI 4-H Arts Camp
<b>23</b> WI 4-H Arts Camp	<b>24</b>	<b>25</b>	<b>26</b>	<b>27</b> VIP Training	<b>28</b>	<b>29</b>
<b>30</b>	<b>31</b> Halloween 					

# 4-H Calendar of Events

## November

4-6: Fall Forum  
6: Pierce County Awards Day  
12-13: WI 4-H Livestock Project Leader Conference  
12-13: WI 4-H Horse Conference  
14: YQCA & Rules Meeting  
24-25: UWEX Office Closed—Holiday  
25-29: National 4-H Congress  
30: YQCA & Rules Meeting

## December

4: Beef Weigh In  
11: Beef Weigh In Snow Date  
11: Volleyball Tournament

## January

7: YQCA & Rules Meeting

## February

5: YQCA & Rules Meeting

## April

15: Sheep/Swine & Goat Weigh In



## ARE YOU INTERESTED IN 4-H? JOINING A CLUB AND GETTING STARTED IS EASY!

For new 4H families follow these easy steps:

1. Find a 4-H Club in Pierce County! If you have questions, please contact the UW-Extension office for assistance at (715)273-6781
2. See the following instructions to enroll your family after you have found a club and visit [wi.4HOnline.com](http://wi.4HOnline.com).

The Following are Instructional PDF's for New Families/Leaders, Club Management and Project Leaders

- [v2.Family.Enrollment.Guide](#)



# Fundraise for Pierce County 4-H by shopping on Amazon by using AmazonSmile!


Remember, if you want AmazonSmile to donate to Pierce County 4-H you can do it by searching "Board of Regents of the University of Wisconsin System, Ellsworth, WI" you need to start each shopping session with the AmazonSmile turned ON in the Amazon Shopping app or on the website, and Amazon will donate 0.5% of the price of your eligible purchases.


## MAILED or EMAIL?

Do you want your Informant mailed via United State Post Office?

Please email [april.daniels@wisc.edu](mailto:april.daniels@wisc.edu) to let us know that you would like a hard copy. Otherwise you will get the INFORMANT via email to the email address that you have listed for your family on 4-H Online.




  
**Pierce County Staff**  
 Kristen Brudee—Interim Area 5 Director  
 Vacant—4-H Program Educator  
 Hannah White-McGinn—Human Development & Relationships Educator  
 Michael Geisinger—Crops Educator  
 Ryan Steyer—Dairy Educator  
 Diana Affeltb—Horticulture Outreach Specialist  
 Katie Bartko—FoodWise Nutrition Coordinator  
 Karen Frantti—Nutrition Educator  
 April Daniels—Outreach Support Specialist  
 Beth McLaughlin—4-H Support Staff  
  
 432 W. Main Street  
 PO Box 69  
 Courthouse Annex  
 Ellsworth, WI 54011  
 715-273-9781  
<https://pierce.edextension.wisc.edu>


**PIERCE COUNTY 4-H LEADERS COUNCIL**  
 The Pierce County 4-H Leaders Council Committee is an Important Group for the Pierce County 4-H Program. This Committee Oversees the 4-H Program and Makes Important Decisions About How and Where the Financial Resources of the 4-H Program Are Spent. They Also Provide Direction for The Educational Programs. *We still need Adult and Youth Members as Representatives. Youth Have an Equal Voice at The Table. The Committee Meets Four Times a Year. NEXT MEETING WILL BE IN DECEMBER, 2022.*
  
**WHAT'S UP WITH YOUR CLUB?**  
 Would you like your Club featured in the next Informant? It's simple! Write up a short article telling us just how fun your club's event was and make sure to include a picture with the names of the members featured. Let us and other clubs know the good work you are doing in the community! To share your club's story please email April at: [april.daniels@wisc.edu](mailto:april.daniels@wisc.edu)

# The Hunger Prevention Council of Pierce County

They are looking for a group to "adopt" the Pierce County Food Pantry garden in 2022 and beyond. In 2021 a garden and fruit trees were planted at the Pierce County Food Pantry to supply food pantry clients with fresh produce. The garden is doing great and the clients are loving the produce. A group is needed to take over the general upkeep of the garden - watering, weeding, harvesting, and fall clean-up. If your group is looking for a service project this could be for you! Contact Katie Bartko at 715-561-1934 or [katie.bartko@wisc.edu](mailto:katie.bartko@wisc.edu) to learn more.







# Pierce County 4-H is now on Facebook & Instagram!!

This will be another way to communicate up to date information and events and learn more about Pierce County 4-H!

Be sure to follow the Facebook page here:  
Pierce County 4-H - Wisconsin

<https://www.facebook.com/piercecounty4HWI>



Be sure to follow the Instagram page here:  
piercecountywi4h

<https://www.instagram.com/piercecountywi4h/>

## 2022-2023 4-H Enrollment

Enrollment for our new 4-H year opens **September 6, 2022!**

- All youth grades K—13th are welcome to enroll in Pierce County 4-H.
- Enrollment will be open from Sept. 6—Nov. 1 for all current 4-H members.
- All members must enroll in at least one 4-H project.
- K—2nd graders are only eligible to enroll in the Cloverbud project
- 3rd grades may only take one animal project
- New members can enroll anytime.
- March 1 is the enrollment deadline to be eligible to show at the Pierce County Fair under the 4-H name
- March 15 is the deadline to add/delete projects

To enroll go to [www.4HOnline.com](http://www.4HOnline.com) and log in to your account. Make sure you hit the submit button when you are finished.



Pierce County 4-H

# VOLLEYBALL TOURNAMENT

DECEMBER 11, 2022

SAVE THE DATE  
MORE INFO TO COME



Extension  
UNIVERSITY OF WISCONSIN-MADISON

*New this YEAR!!*

*Alumni Tournament—Be sure to tell your  
alumni, so they come back for a fun time*

**Does your 4-H Club or Committee need to use a building, space or area at the Fair grounds?**



**You must reserve the space, building or area by following this Google link and filling out the form. It will only take 3 minutes. We will let you know if your request is approved. It must be approved by the Fair & Extension.**

**Let us know if you have any questions. Call or email 715-273-6871 [april.daniels@wisc.edu](mailto:april.daniels@wisc.edu)**

**[https://docs.google.com/forms/d/e/1FAIpQLSc9FmojhNh8isNgJokfVqtc\\_6te5WhnZ5-d09iAkKi7HbvYcg/viewform](https://docs.google.com/forms/d/e/1FAIpQLSc9FmojhNh8isNgJokfVqtc_6te5WhnZ5-d09iAkKi7HbvYcg/viewform)**

## ***Notes from the Pierce County Fair***

To All Superintendents and Helpers at the Pierce County Fair: Thank you for all you did to make this fair a success! We are truly grateful for your dedication and work in managing over 10,000 exhibits. Thanks a million for volunteering, we look forward to seeing you at the 2023 Pierce County Fair!

Fair Staff - Liz, Matt, Ashley, Sherri, and Matt's Crew

Plaques and Premium Sponsors: There are many area businesses, 4-H Clubs, and individuals who donate time, money, and plaques for the Fair. Please take time to send a thank you to them for their support if you were awarded a trophy or plaque. Their information is listed on the back of your plaque.

Fair Signs: Thank you for all the work and creativity you all put into your sign designs!

Winter time is a good time to consider making more, we especially need some in the Prescott area. Let Liz know if you are interested in making more signs.

Premium Checks: This is a great reward for Pierce County Fair Exhibitors! HOWEVER, WE NEED TO HAVE YOUR CHECK CASHED WHATEVER THE AMOUNT!!! To help everyone with this, we are planning to bring premium checks to the area schools where each exhibitor may exchange their check for cash. Please watch for notices in October about your school's date and time.

Questions? Contact the Pierce County Fair Office at: 715.273.6874 or [liz.dietsche@co.pierce.wi.us](mailto:liz.dietsche@co.pierce.wi.us)





**What will  
they think  
of next?**



[Cedar Crest Ice Cream](#), headquartered in Cedarburg, Wisconsin, and the [Wisconsin 4-H Foundation](#) have teamed up again to present the “Cedar Crest Ice Cream 4-H Flavor Creation Contest” for Wisconsin 4-H clubs. More than 1,600 clubs are eligible to submit their idea for a new ice cream flavor, along with a flavor description and interesting flavor name.

A panel of ice cream experts chosen by Cedar Crest judges the entries. Five finalists are selected, with one flavor awarded top honors and \$500.

According to Brenda Scheider, Executive Director of the Wisconsin 4-H Foundation, the contest is a great opportunity for 4-H youth to work together to develop and name their fla-

vor. “The most exciting part of the contest is the winning flavor will be available in parlors that scoop Cedar Crest Ice Cream next July.”

All five finalists will also receive an ice cream party for their 4-H club.

Recent winning flavors of the annual contest include Big Muddy, created by the Baraboo Valley 4-H Club and Wisconsin Campfire S’mores, created by the Springbrook 4-H Club of New Richmond. This year’s winning flavor was Haystack, created by the Knellsville 4-H Club in Ozaukee County.

“Cedar Crest Ice Cream is known for its variety of flavors,” said Robert Kohlwey, vice president of sales for Cedar Crest Ice Cream. “It is a real joy to see the imaginative flavor ideas submitted by young people across the state.”

Cedar Crest manufactures more than 80 flavors of ice cream, along with frozen custard, sherbet and sorbet at its Manitowoc, Wisconsin, plant, and distributes products in parlors and retail locations in Wisconsin and beyond. Several of the flavors now in regular production, including Wisconsin Campfire S’mores and Big Muddy, are a result of the contest.

More information and the entry form are available at [www.cedarcresticecream.com](http://www.cedarcresticecream.com). Entries are due by November 15, 2022. The winner will be announced in early 2023.



# FALCON FALLS 4-H CLUB NEWS

At our September 18th meeting, members enjoyed a day of fun at Homestead Park. They spent time kayaking, paddle boarding, or swimming. The Vold and Symicek families provided kayaks for us to use. Some members were experienced, others were new to being on the water. Everyone, no matter their experience level, had such a good time.

Samantha Miller, Falcon Falls Club Historian





# 2022 Fall Forum and Hall of Fame Celebration

Friday, November 4, 7:00 -11:00  
p.m. – registration begins at 6:00  
p.m.

Saturday, November 5, 8:00 a.m.  
– 8:30 p.m. with activities to fol-  
low dinner (registration begins at  
7:30 a.m.)

Sunday, November 6, 8:30 a.m. –  
11:00 a.m.

Announcing the 2022 Fall Forum  
and Hall of Fame Celebration at  
Hotel Mead & Conference Cen-  
ter, Wisconsin Rapids! All youth  
in grades 7-13, adult volunteers,  
and staff are invited to attend.



## What is Fall Forum?

- Fall Forum is an opportunity for learning and networking for youth and adult volunteers.
- Sessions are interactive and provide practical ideas to use within a club, school, or community program.
- Youth and adults learn together!
- All participants will take great resources and inspiration home with them.
- This year's forum offers over 25 educational workshops and over 15 different interactive learning stations.
- [Jesse Horn](#), sport stacker, motivational speaker, and author, will provide the keynote address and an opportunity to try cup stacking on Friday night.

Check out the 2022 Fall Forum promotional website for more details: <https://sites.google.com/wisc.edu/2022fallforum/home>.

# WISCONSIN 4-H HORSE LEADER CONFERENCE

## NOVEMBER 12-13, 2022 AT UW-RIVER FALLS

Open to 4-H volunteers and 4-H members grade 7 and older.

**Dates:** November 12-13, 2022

**Location:** UW River Falls Campus and Lab Farm

**Cost:** \$75.00 per person (includes morning and afternoon breaks, lunch, and dinner on Saturday and a breakfast break on Sunday morning)

**Registration Deadline:** October 31st

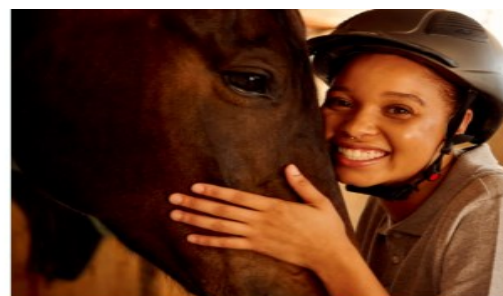
Registration is open! Find details at: <https://4h.extension.wisc.edu/.../state-4-h-horse.../>

we are excited for the 2022 WI 4-H Horse Conference at UW River Falls. On Saturday, you will have an opportunity to attend a number of rotating sessions on topics related to horses, developing your leadership skills, learning more about UW River Falls and so much more. On Saturday evening, after the conference will end with dinner. After dinner, members and volunteers are encouraged to attend the 4-H horse association district and state meetings taking place in the same locations. On Sunday, you will have an opportunity to go to the UW River Falls lab farm and experience sessions there with faculty from UW River Falls and other presenters.

# WI 4-H HORSE LEADERSHIP CONFERENCE

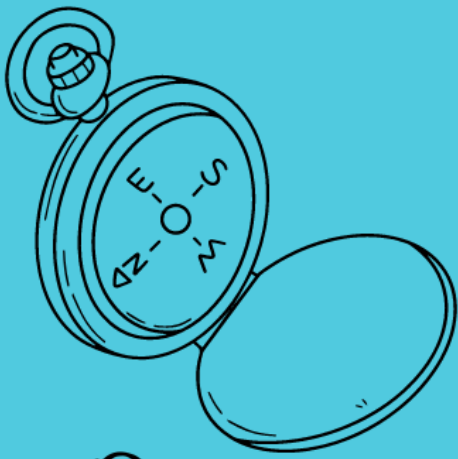
# Registration Open

## NOVEMBER 12-13 UW RIVER FALLS



Extension  
UNIVERSITY OF WISCONSIN-MADISON





# Pierce County 4-H Discovery Day

Watch for more information!



18 USC 707



**Extension**

UNIVERSITY OF WISCONSIN-MADISON

## Leader Re-Enrollment

All re-enrolling 4-H volunteer leaders will need to comply with the following training requirements:

- Annually sign the 4-H Volunteer Expectations Form (part of re-enrollment through 4-HOnline)
- Federal background check (every 4 years) - you can complete this online or via paper
- Mandated Reporter Training (all volunteers must complete this at least once)
- Title IX Reporting Training (all volunteers must complete this at least once)
- Supporting Youth Mental Health Training (all volunteers who are planning on being a 4-H chaperone)
- Shooting Sports Training (requirement for any volunteer wishing to assist with the shooting sports program)

*Put it on your calendar and plan to join us  
as we celebrate our award winners,  
volunteers & Friends of 4-H.*

PIERCE COUNTY 4-H  
AWARDS DAY

NOVEMBER 6, 2022

2:00 PM

ELMWOOD AUDITORIUM



Extension

UNIVERSITY OF WISCONSIN-MADISON



# Resources for Volunteers

*Looking for resources to support your work as a 4-H volunteer? Check out these Wisconsin Positive Youth Development (PYD) resource libraries! You'll uncover everything from downloadable lesson plans and project tip sheets to ready-to-use, hands-on educational materials you can borrow! There's a treasure trove of materials just waiting to be discovered!*

## PYD MEDIA COLLECTION

A collection of free resources which can be borrowed for use in programming statewide. Mostly animal science, but some other project areas.

### **Sample Resources:**

*Hippology Charts, Learning Labs, DVD's, Skillathons, and Displays*  
<https://go.wisc.edu/1tnckj>

## RESOURCE LIBRARY

A searchable library of resources related to 4-H community club organization, 4-H projects, youth-adult partnerships, and more.

The PYD Media Collection is also included in this mix.

### **Sample Resources:**

*Project Tip Sheets, Lesson Plans, Club Financial Report Forms, and PYD Media Collection Resources*  
<https://go.wisc.edu/emz3iw>



## VOLUNTEER RESOURCES WEBSITE

A resource hub for youth leaders, club volunteers, project volunteers, and more.

### **Sample Resources:**

*Trainings, Marketing and Communication, Volunteer Recognition Opportunities, and Financial and Administrative Information*  
<https://go.wisc.edu/1271sv>



**If you have questions about any of the resources, contact your local county educator.**

Developed by Educational Resources Standing Committee, August 2022.

An EEO/AA employer, University of Wisconsin-Madison Division of Extension provides equal opportunities in employment and programming, including Title VI, Title IX, the Americans with Disabilities Act (ADA) and Section 504 of the Rehabilitation Act requirements.

# Livestock Information

## **Jim Geraets Memorial Scholarship/Grant**

The Pierce County 4-H/FFA Livestock Committee is proud to announce the Jim Geraets Memorial Scholarship! Those who knew Jim, know that he was very passionate about the livestock project and no matter the species, he was a huge advocate to help youth get started in the project & now to help honor Jim we are offering up to three scholarships to help members get started in the project. Please see enclosed flier & application for full details on how to apply.

## **Kids & Cows - Saturday, October 8th**

The annual Kids & Cows Family Day has been pre-approved for workshop credit by the Livestock Committee. They will have seminars as well as fitting contests & Ag Olympics that participants may take part in. For full details please visit the Northern Wisconsin Beef Producers website at: <https://nwbpa.weebly.com/kids--cows-family-day.html>

Participants must fill out an Educational Verification form & have it signed by workshop presenter or event host. They are available on the Pierce County Livestock website.

## **Pierce County 4-H/FFA Livestock Committee Meeting**

Our next meeting will be held on Monday, October 25th at 7pm in the Ag Room of the Ellsworth High School. Meetings are open to all 4-H & FFA members as well as any volunteers that would like to attend.



Be sure to follow us on Facebook &/or Instagram or check out our website at: [www.piercecountylivestock.weebly.com](http://www.piercecountylivestock.weebly.com) for more events that may pop up between newsletters. As always, feel free to email the livestock committee if you have questions.

Our email is: [piercecountylivestockcommittee@gmail.com](mailto:piercecountylivestockcommittee@gmail.com)

## **Jim Geraets Memorial Scholarship/Grant**

For those of you that knew Jim, you know that he was very passionate about the livestock program. He touched a lot of lives & would help anyone & everyone to be able to get started in the project. Well, thanks to the help of some incredibly kind & generous donors, we were able to start a fund to help keep his legacy alive & to continue to do what he was best known for.

We will be giving up to three \$100 scholarships to new members that will be participating in the beef, goat, sheep or swine projects.



## JIM GERAETS MEMORIAL SCHOLARSHIP/GRANT APPLICATION

Up to three \$100 scholarships will be awarded to deserving candidates. Scholarship funds will be awarded based on the quality of the content not financial need.

Applicants must be:

1. Enrolled in a Pierce County 4-H Club or FFA Chapter & be a member in good standing of their respective organization.
2. A first or second year member in the livestock project (must be enrolled in the beef, sheep, goat or swine project at the time your application is submitted).
3. Applications & answers to the questions must be hand written by the applicant.

Please print clearly

Name: \_\_\_\_\_ Age: \_\_\_\_\_

Club or Chapter: \_\_\_\_\_ Current grade: \_\_\_\_\_

Parents Names: \_\_\_\_\_

Street address: \_\_\_\_\_ City: \_\_\_\_\_ Zip Code: \_\_\_\_\_

Species you plan to show:     BEEF         GOAT         SHEEP         SWINE

Is this your first or second year in the Livestock project?     FIRST         SECOND

On a separate sheet of paper please answer the following questions:

1. What other projects &/or activities do you participate in?
2. Why did you decide to participate in the livestock project?
3. What are your goals for this project?
4. What do you think will be the most difficult part?
5. If you were to win a scholarship, how would you use the funds?

Applications can be scanned & emailed to the Pierce County Livestock Committee at [piercecountylivestockcommittee@gmail.com](mailto:piercecountylivestockcommittee@gmail.com) or turned in to the Pierce County Extension Office. Applications are due no later than Friday, October 21, 2022.



Don't miss out on the opportunity to learn more about our world as the Fall Virtual Global Exploration Series continues its "trip" around the world with six upcoming sessions focusing on countries and cultures from around the world! This program is designed for youth of all ages and their families. UW-Madison International Students serving as Reach Program Ambassadors will be sharing information about their home country, different aspects of their culture, and language!!! Last spring, participants explored China, India, Kazakhstan, Nigeria, and Malaysia. By participating in the Global Exploration Series, participants will have the opportunity to gain deeper understanding and appreciation of other countries and cultures, reflect on important aspects of their own culture, and increase their curiosity and desire to explore the world!

Sessions will be held bi-weekly via Zoom at 7:30 PM and are scheduled for October 6 and 18, November 3 and 15, and December 1 and 13. Join for any or all of the sessions! What country will be featured first?! Participants will have the opportunity to share their guess through the brief registration form. A winner will be randomly selected from the correct answers to receive a prize of 4-H and international goodies!

**How Do I Sign Up?** You are invited to join us for any or all "stops". Registration is now open on 4-H Online under the "Events" tab. Check out our webpage at [go.wisc.edu/50163o](https://go.wisc.edu/50163o) for more information or for guidance about registering for an event through 4-H Online.

**Questions?** Feel free to reach out to a member of the WI 4-H International Program Team at [wi4hinternational@extension.wisc.edu](mailto:wi4hinternational@extension.wisc.edu) with any questions and/or for more information about the Fall Virtual Global Exploration Series.



Northern Wisconsin Beef Producers

# 17th Annual Kids & Cows Family Day

Saturday October 8, 2022

at Barron County Fairgrounds  
Rice Lake, WI



Education, Fun



Hands On Learning



All Ages & Experience Levels

- Registration.....7:30-9:00
- Educational Workshops..... 9:00-12:00
- Lunch/Fun Break (Noon-1:00)...  
*Food Stand, AG Olympics & Fitting Contest*
- Showmanship Competition..... Begins at 1:15  
*Showmanship is open to all ages  
and classes are youngest to oldest.*
- Breed Show..... Following Showmanship



**For Rules and Entry Information:**

[www.wisconsinbeefproducers.com](http://www.wisconsinbeefproducers.com)

Contact Lori Lyons 715-210-0049 or [lalyons4@yahoo.com](mailto:lalyons4@yahoo.com)

\$10 Per Kid

**RSVP preferred but not required on website.**

\*Kids are encouraged to bring their own cattle—kids and adults without will have one provided





REGISTRATION OPEN!

# YPCL 2022

Register now through  
**OCTOBER 5, 2022**

**October 21-23, 2022**  
**Camp Turning Rivers**

Campbellsport, WI

The mission of the Youth as Partners in Civic Leadership Conference (YPCL) is to advance youth voice in Wisconsin by increasing the capacity for youth and adults to share civic leadership in local communities, schools and organizations. We advocate for a youth voice and build mentoring, networking and learning opportunities.

## Workshops and Activities:

- Healthy Living
- Interpersonal Relationships
- Diversity/Multicultural Engagement
- Ending Bullying and Youth Violence
- Youth and Adult Partnerships
- Advocacy Roundtable
- Talent Show

## Details

YPCL is open to high school age youth and adults. Teams of youth and adults participate in the program by registering as a group and registering individually. Registration cost is \$120 per person. Scholarships are available to help cover the cost of program. For questions, contact [joe.maldonado@wisc.edu](mailto:joe.maldonado@wisc.edu).



Find more information on the YPCL website: [tinyurl.com/ypcl22](http://tinyurl.com/ypcl22)

## VIP Trainings - Required for New 4-H Volunteers

If you have adults who are interested in becoming certified 4-H volunteers they are required to take the Volunteer in Preparation Training (VIP). Completion of a VIP Training is one of the requirements to becoming a certified 4-H volunteer. All VIP Trainings will be held both in person and virtually this fall. These trainings take 1—1 1/2 hours to complete. For more information contact Sky [sky.holt@wisc.edu](mailto:sky.holt@wisc.edu)

October 27th @ 6 pm (RSVP by October 18)

**TO REGISTER FOR A TRAINING GO TO:**  
<https://forms.gle/JuZqC663MA3JYQbcA>

Pierce County is doing their VIP Trainings with St. Croix at this time. If you have any questions, please reach out to our office. 715-273-6781

### Steps to Becoming a 4-H Volunteer

- 1.) Enroll in 4-H Online
- 2.) Complete a National Background Check
- 3.) Attend VIP Training
- 4.) Completed online Mandated Reporter Training
- 5.) Complete online Title IX Training



# Wisconsin 4-H Leadership Council

Apply for Wisconsin Leadership Council – Grades 9-11 & Adult Volunteers

Applications due October 14, 2022; Elections at Fall Forum

The Wisconsin 4-H Leadership Council (WLC) provides a statewide forum for youth and adult volunteer leaders to discuss ideas and provide input to enhance UW-Extension 4-H Youth Development programs at the state, county, and local levels. WLC members:

- Serve as leaders and role models for 4-H youth and adults
  - Advocate for Wisconsin 4-H
  - Provide input for enhancing the 4-H program
  - Provide educational opportunities to 4-H members and leaders
  - Connect the county, regional, and state levels of Wisconsin 4-H, as well as the Wisconsin 4-H Foundation
- 2022-23 Applications now posted!

<https://4h.extension.wisc.edu/opportunities/statewide-events-and-opportunities/wisconsin-4-h-leadership-council/> for more information and applications.



To sign up for our emailed newsletter, fill out the following fields and hit submit or scan the QR code. We promise we won't spam you! We intend to publish every 4-6 weeks. Our newsletter will contain 1-2 articles,

First name \_\_\_\_\_ Last name \_\_\_\_\_

Email address \_\_\_\_\_

Postal code \_\_\_\_\_



This year, Wisconsin 4-H has launched a new marketing and visibility campaign...statewide! You may see digital ads on streaming TV, hear them on Spotify, or catch them throughout family-focused websites and social media.

Another great way to market is through sharing the fun and meaning of the 4-H program with your friends and family! Don't keep 4-H a secret - share our new Wisconsin 4-H landing page with anyone who is curious about 4-H (or even your 4-H friends to encourage them to re-enroll). <https://4h.extension.wisc.edu/growshere/>

Let's shine a light on 4-H this fall, grow our 4-H clubs, and do even more good throughout our club, community, country, and world. Because, in the end, making this world a better place is what the 4-H community does best!

Articles in this issue include:

- Join a Wisconsin 4-H State Team in 2022-23
- 2022 WI 4-H Arts Camp - Register Today!
- 4-H Summer STEM Exploration for Youth in Milwaukee
- 4-H Week Toolkit from National 4-H Council
- UW-Madison Chancellor Visits Brown County 4-H!
- Cedar Crest Ice Cream 4-H Flavor Creation Contest
- Tractor Supply Paper Clover Campaign

See all the latest State 4-H News here.  
<https://4h.extension.wisc.edu/home/news/>



**LET'S SHOW**  
*American Idol*  
**SOME**  
**4-H GROWN**  
**TALENT!**

**SIGN UP NOW!**  
AMERICANIDOL.COM/AUDITIONS



On Thursday, October 6th, American Idol will host an exclusive virtual audition day for current 4-H'ers & 4-H alum ages 15-28 for a chance to become the next American Idol. Help us spread the word to give your 4-H'ers a chance at their big break! Registration CLOSING on October 6th at 3 PM ET. Sign up now: <https://fmna.etribez.com/ag/fmna/ai6abc/welcome4HShowcase.html>

## Did you participate in the 4-H Study of Positive Youth Development (PYD)?

If you participated in the 4-H Study of Positive Youth Development, conducted by Richard M. Lerner and Jaqueline V. Lerner (2002-2012), we would like to hear from you again!



Thanks to participation from 2500 youth involved in 4-H, researchers found 4-H to be an exemplar of a youth program that promoted Positive Youth Development. If you are interested in learning more about the original study, please go to: <https://4-h.org/about/research/>. The findings from the study have been widely used in youth programs across the nation and the world.

The youth development research team at Tufts University and Boston College are conducting a study to reconnect with participants from the original 4-H Study of PYD to learn about the life and work activities, health and well-being, and especially, the family, community, and national contributions and civic engagement of the participants from the original study. This follow-up study will involve a one-time online survey that will take approximately 20-30 minutes. The survey is open to participants from the original 4-H Study who are currently in the United States at the time they take the survey. Participants will be compensated for their time with a \$50 gift card.

If you believe you participated in the initial 4-H Study of Positive Youth Development and are interested in being a part of the new study, please see the attached flyer or contact us at [PYDStudy@Tufts.edu](mailto:PYDStudy@Tufts.edu) or (617) 863-2283.



# OTHER NEWS

## 2023 Wisconsin Honey Queen Candidates

The Wisconsin Honey Producers Association is seeking candidates for the position of 2023 Wisconsin Honey Queen. The Wisconsin Honey Queen serves a four-part role on behalf of the honey and beekeeping industry in the State of Wisconsin: Promoter, Educator, Ambassador, and Spokesperson. She makes appearances on behalf of the Wisconsin Honey Producers throughout the state of Wisconsin doing radio, television, and newspaper interviews, educational presentations in schools and with other social and civic groups, appearances at fairs and festivals, and marketing presentations in a variety of venues. At the end of her reign in Wisconsin, she represents the Wisconsin Honey Producers at the American Honey Queen competition held at the American Beekeeping Federation convention in January of 2024. Applications are due by **October 8, 2022**.

The Wisconsin Honey Queen committee has worked with colleges and universities to provide this year long experience as an unpaid college internship.

Qualifications for this position include:

1. Must be a single female, between the ages of 18 and 24 years of age as of January 1, 2023, and a high school graduate.
2. Must have a valid driver's license and reliable transportation.
3. Candidates may never have married and have no children.
4. Do not need to have beekeeping background but must be willing to learn about beekeeping and the industry.
5. May not hold any other title at the same time as the title of Wisconsin Honey Queen.

To apply for this position and obtain full details, or to obtain more information, contact Mary Kettlewell at [wihoneyqueenprogram@gmail.com](mailto:wihoneyqueenprogram@gmail.com) or by phone at 414.429.5502. Information will also be posted on the Wisconsin Honey Producers website, [www.wihoney.org](http://www.wihoney.org)





# TSC Paper Clover Campaign

The Wisconsin 4-H Foundation will provide an incentive to any 4-H club or individual 4-H member who does an in-store promotion at a Wisconsin TSC store during the Fall 2022 Paper Clover Campaign. **A \$50 TSC gift card will be given to any club who completes an in-store promotion and a \$25 TSC gift card will be given to any 4-H member who completes an in-store promotion during the Fall 2022 Paper Clover Campaign.**

Any Wisconsin 4-H club, group or 4-H member may coordinate an in-store promotion at a TSC during the Fall 2022 Paper Clover Campaign. Past promotions included project displays, animal exhibits, radio live-remotes (with a local radio station), 4-H members serving as baggers, kids activities like face painting, etc. Before planning a promotion

we **REQUIRE** that the club, group or member reach out to the Store Manager to determine what would work best.

**IT'S PAPER CLOVER TIME!**

OCTOBER 6 - 9, 2022





# District Gymkhana

Here's a few photos. The kids did amazing! Way to represent Pierce County!







## **PIERCE COUNTY 4-H AMBASSADOR ROLE DESCRIPTION**



### **Qualifications**

- Ambassador must be entering 7<sup>th</sup>–13<sup>th</sup> grade at the beginning of the 2021-2022 school year.
- Ambassador must be enrolled as an active 4-H club member & must have achieved in the 2021-2022 4-H year. Leadership within clubs is encouraged!
- All applicants must attend an initial interview on that will be scheduled after completion of application.
- Possess qualities such as, but not limited to: communication, leadership, dedication, professionalism, having a growth mindset

### **Ambassador Term**

Ambassadors are interviewed and selected in the fall (Sept. / Oct.) Once selected, they may begin a one year term, which concludes at the Ambassador selections the following year. Ambassadors may return for more than one term.

### **Ambassador Duties:**

These opportunities are intended for you to increase your knowledge and experience with communication, public relations, leadership and teamwork skills:

#### **Mandatory**

- Communicate effectively with adult advisors and fellow Ambassadors!
- Speak about, or promote, the Ambassador program (**outside of your own club**).
- Complete shift(s) in the 4-H Information Booth at the Pierce County Fair.
- Actively participate in at least **three** other events in an Ambassador capacity (see list under 'Possible Events & Activities')

#### **Desired**

- Actively lead an event committee in which the Ambassadors provide county support; a written report, post event, may be requested (role, participation, feedback).
- Attend an Ambassador retreat, as well as any scheduled meetings or gatherings.
- Attend the Pierce County Leadership Day.

*The University of Wisconsin-Madison Division of Extension provides affirmative action and equal opportunity in education, programming and employment for all qualified persons regardless of race, color, gender, creed, disability, religion, national origin, ancestry, age, sexual orientation, pregnancy, marital or parental, arrest or conviction record or veteran status.*

### Discouraged

- Poor representation (language/behavior) of the 4-H Ambassador Program may be grounds for dismissal.

### Dress Code

As an Ambassador we'd like you to look the part. Therefore, you will be provided with an embroidered polo (P), as well as a screened t-shirt (T). Please always pair the polo with khakis and the t-shirt with modest jeans or shorts. All clothing should always be modest, comfortable, non-ripped, and clean. If you wouldn't wear it in front of your grandparents, please don't wear it to a 4-H Youth Ambassador event. Once issued, shirt recommendations are listed with the events below.

### Possible Events & Activities

These events are intended for you to increase your leadership and public relations skills, and to promote, throughout Pierce County, opportunities available within 4-H (The majority of these events require Saturday availability):

- (P) Annual Awards Banquet
- (T) Discovery Day
- (T) Cloverbud/Explorer Fun Day (Fall)
- (P) Creative Arts & Communications Festival
- (T) Cloverbud/Explorer Fun Days (Winter)
- (P) Performance Arts Festival
- (T) Cloverbud/Explorer Fun Day (Spring)
- (P) 4-H Golf Classic @ Kilkarney Hills Golf Club
- (T) Pierce County Dairy Breakfast
- (T) Cloverbud/Explorer Fun Day (Summer x2)
- (T) Pierce County Information Booth
- (T) Parades (Locations and dates TBD)
- Additional events possible

Your 4-H Ambassador Leader(s) and the UW - Madison Division of Extension – Pierce County hope to provide you a valuable experience! We encourage you to reach out to us with any questions or concerns! Here's how we can be reached:

**Beth McIlquham- [mcilquham2@wisc.edu](mailto:mcilquham2@wisc.edu)**

**Direct line: 715-273-6781 ext:6698**

**UW - Madison Division of Extension – Pierce County**

*The University of Wisconsin-Madison Division of Extension provides affirmative action and equal opportunity in education, programming and employment for all qualified persons regardless of race, color, gender, creed, disability, religion, national origin, ancestry, age, sexual orientation, pregnancy, marital or parental, arrest or conviction record or veteran status.*





# Pierce County 4-H Ambassador Application

*Do you want to share in 4-H promotion with other teens from around Pierce County? Become a Pierce County 4-H Ambassador!*

**WHO CAN APPLY?** Any 2022-2023 7<sup>th</sup>-13<sup>th</sup> grade Pierce County 4-H member (*who has achieved in the 2021-2022 4-H year*).

## WHAT DO AMBASSADORS DO?

- Represent & promote 4-H through activities and events throughout Pierce County
- Select and complete, as a group, a community service project.
- Represent, assist & interact with other teens and youth throughout Pierce County.

## EXPECTATIONS:

Please review the *Ambassador Role Description* on the Pierce County web page.

## HOW TO APPLY:

1. Fill out the application on the following page. Application is due to the Pierce County Extension office by **Friday, September 30<sup>th</sup>**.
2. Any questions please contact the Pierce County 4-H Extension office.
3. All applicants, **MUST** submit **BOTH** of the following with their application:
  - a. Letter of recommendation from a club **OR** project leader (not your parent).
  - b. Letter from a parent/guardian, indicating their review and acceptance of their supporting role (internet access, transportation...).
4. All applicants will be slotted for interviews after application is completed and submitted. Please watch for an email concerning your interview time.

***Please remember, this is NOT your parent's responsibility to complete!***

Application is due September 30

Mail to: UW - Madison Division of Extension - Pierce County, PO Box 69, Ellsworth, WI 54011

Or Email to: [mcilquham2@wisc.edu](mailto:mcilquham2@wisc.edu)

# **Pierce County Ambassador Application Form**

Applicants must be 7<sup>th</sup>-13<sup>th</sup> grade in the 2022-2023 school year. Applicants must be enrolled as Pierce County 4-H members. **Please type or PRINT clearly!**

Name: \_\_\_\_\_

Mailing address: \_\_\_\_\_  
\_\_\_\_\_

Phone (Primary): \_\_\_\_\_ (Secondary): \_\_\_\_\_

E-mail address (self): \_\_\_\_\_

School Name: \_\_\_\_\_ 2022-2023 Grade: \_\_\_\_\_

Parent/Guardian Name: \_\_\_\_\_

E-mail: \_\_\_\_\_

**\*\* \*\*\* Note: Due to system restraints & failures, school email accounts are UNDESIREABLE! \*\*\*\*\***

4-H Club: \_\_\_\_\_ # of years in 4-H: \_\_\_\_\_

4-H Honors, Awards & Leadership: \_\_\_\_\_  
\_\_\_\_\_

4-H Club & County Participation: \_\_\_\_\_  
\_\_\_\_\_

Top 5 project areas: \_\_\_\_\_  
\_\_\_\_\_

How/what could you contribute to 4-H as an ambassador? \_\_\_\_\_  
\_\_\_\_\_  
\_\_\_\_\_

Extra-curricular activities (outside of 4-H): \_\_\_\_\_  
\_\_\_\_\_

Do you have any questions ahead of time for the ambassador committee? \_\_\_\_\_  
\_\_\_\_\_

Application is due September 30  
Mail to: UW - Madison Division of Extension - Pierce County, PO Box 69, Ellsworth, WI 54011  
Or Email to: [mcilquham2@wisc.edu](mailto:mcilquham2@wisc.edu)



University of Wisconsin - Extension  
Pierce County Office  
PO Box 69  
432 Main Street  
Ellsworth, WI 54011  
Phone: (715) 273-6781

# October Information



Extension

UNIVERSITY OF WISCONSIN-MADISON  
PIERCE COUNTY

The University of Wisconsin-Extension provides Title IX requirements, which include affirmative action and equal opportunity in education, programming and employment for all qualified persons regardless of race, color, gender, creed, disability, religion, national origin, ancestry, age, sexual orientation, pregnancy, marital or parental status, arrest or conviction record or veteran status. Requests for reasonable accommodations for disabilities or limitations should be made prior to the date of the program or activity for which it is needed. Please do so as early as possible prior to the program or activity so that proper arrangements can be made. Requests are confidential (ADA requirements).