



PIERCE COUNTY 4-H INFORMANT ~ AUGUST 2022



UW-MADISON EXTENSION
PIERCE COUNTY

Pierce County Staff

Kristen Bruder— Area 5 Director

Sky Holt - 4-H Program Educator

**Vacant-Human Development
& Relationships Educator**

Michael Geissinger—Crops Educator

Ryan Sterry—Dairy Educator

Diana Alfuth-Horticulture Outreach Specialist

Katie Bartko-FoodWise Nutrition Coordinator

Karen Frantti—Nutrition Educator

April Daniels—Outreach Support Specialist

Beth McIlquham— 4-H Support Staff

432 W. Main Street

PO Box 69

Courthouse Annex

Ellsworth, WI 54011

715-273-6781

<https://pierce.extension.wisc.edu/>



PIERCE COUNTY 4-H LEADERS COUNCIL

The Pierce County 4-H Leaders Council Committee is an Important Group for the Pierce County 4-H Program. This Committee Oversees the 4-H Program and Makes Important Decisions About How and Where the Financial Resources of the 4-H Program Are Spent. They Also Provide Direction for The Educational Programs. *We still need Adult and Youth Members as Representatives.* Youth Have an Equal Voice at The Table. The Committee Meets Four Times a Year.

SEPTEMBER 14, 2022 6:30 PM,
PIERCE COUNTY COURTHOUSE ANNEX
CONFERENCE ROOM

WHAT'S UP WITH YOUR CLUB?

Would you like your Club featured in the next Informant? It's simple! Write up a short article telling us just how fun your club's event was and make sure to include a picture with the names of the members featured. Let us and other clubs know the good work you are doing in the community! To share your club's story please email April at:

april.daniels@wisc.edu

Smiles, laughter and life lessons at the fair!

Fair is an event that requires effort on the part of countless parents, volunteers & leaders, but yields great rewards for those who can appreciate the smiles, laughter & life lessons it offers our young people. I invite you to take a moment & consider the following when you visit the next fair and look into the eyes of the adults who surround the exhibitors.



Adults serve in some important roles & these are just a few of them.

Supporter. Parents, volunteers & leaders support the exhibitors & their families as they compete & participate. They offer kind, encouraging words to help them understand defeat & be humble when they win. They celebrate success & handle defeat, processing what may be done differently to improve for the future when the time is right, not necessarily right away. Support comes in a variety of forms: a smile, an encouraging word or a handshake.

Cheerleader. They are in the stands & on the sidelines cheering on youth exhibitors, anxiously awaiting the results & watching the judge to see how they place the class. Adults need to not interfere with officials or distract members while they are competing. Coaching takes place before the event, not during the event. The best coaches know when to step back & let their players perform. Give them the time to shine.

Teacher. Sometimes the teacher presents the most important lessons when they are silent & allow the student to learn for themselves. At other times, the teacher helps the student process all that has happened by listening, reflecting back & conversing with the young person. A good teacher knows to adjust their techniques to fit the situation & the student.

Role model. Be the example. It sounds simple but it is really hard, especially when you are tired, hot, on day five of the fair, & did I mention stressed out? Be the person you were meant to be—the kids are watching! We need you to be the role model who inspires them to be their best. When you are not up to the task, take a timeout & defer to another adult. You expect the best from your members, so expect the best from yourself.

Helper. Hold the halter, carry supplies, walk alongside & fetch more projects from the car so the child can stand in line to be interviewed and judged. This is the week when some of us need to step aside & assist because it is their project, not ours. We ask what they need help with because we know they have it under control; we are simply there to be the driver & helper.

You may see parents, family members, leaders & volunteers in these roles and more. You may see them display signs of being nervous, proud, overwhelmed or filled with a lot of emotion; after all, this is their child's moment in the spotlight, regardless if they are holding a rabbit, pillowcase, cake or the halter of a steer. They are waiting to hear the name of their child, the ribbon & the look on their face.

Support the new 4-H families in your club and appreciate those who are carrying on the tradition of mentoring the next generation.

Being an adult with an exhibitor at the fair means you experience endless joy as your exhibitors exchange smiles, laughter & tools for the project area. However, you may also find that tears come easy because you are sleep deprived after long days & lack of sleep, eating corn dogs & cotton candy, & swelling with a pride that comes from knowing you taught your members valuable skills in the last year. Skills that helped them achieve the goals they set at the beginning of the year.

Superintendents, judges & volunteers of all types help make our fairs the success they are by serving in roles that are essential to getting the projects, people, programs & shows in place. It is this teamwork & dedication that creates the magic that we enjoy as fair.

Yes, I know it is not all cotton candy and blue ribbons, but when the year is done & we step back to truly reflect, we can all admit lessons are learned. If we grow through those lessons, we look forward, set new goals & move forward.

August 2022



SUN	MON	TUE	WED	THU	FRI	SAT
	1	2 -Horse Committee Meeting	3 -Mock Show, Pleasure	4 -Avian Bowl Practice -Mock Show, Gymkhana -Wisconsin State Fair Begins -Archery & Air Rifle Practice	5 -Mock Show, Jumping -Cat Show	6 -Powder Burning Events -Dog Show -Robotics
7 -Mandatory Horse Barn Clean Up & Meeting -Archery & Air Events	8 Fair	9 Fair	10 Fair	11 -Pierce County Fair officially begins	12 Pierce County Fair Livestock Auction	13 Pierce County Fair
14 -Wisconsin State Fair Ends -Pierce County officially ends -Animal Scramble -Graduate Appreciation	15	16	17	18 -Avian Bowl Practice	19	20
21	22	23	24 730-Carcass Show	25 Avian Bowl Practice	26	27
28 District Horse Show	29 Livestock Meeting	30	31			

4-H Calendar of Events

September

- 5: Office Closed-Holiday
- 10: Award Packets due from Club leaders
- 10-11: State 4-H Gymkhana
- 14: Leaders Council Meeting
- 16-18: State 4-H Horse Expo
- 30: WI State Dog Show

October

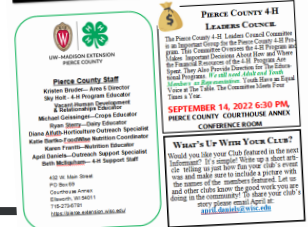
- 1 & 2: WI State Dog Show
- 2-8: National 4-H Week : Opportunity4all



MAILED or EMAIL?

Do you want your Informant mailed via United State Post Office?

Please email april.daniels@wisc.edu to let us know that you would like a hard copy. Otherwise you will get the INFORMANT via email to the email address that you have listed for your family on 4-H Online.



4-H Week Displays

National 4-H Week will be here before we know it. We are hoping to get all the clubs involved this year with 4-H promotions. Start thinking about your club 4-H Week Displays. Below is a list of ideas. We will be judging all entries and clubs will win a cash prize. If your club plans to participate let April know by Oct. 1.

- Create a 4-H Window Display at a local business
- Set up a display at the library or at your school
- Put an ad in your local paper
- Submit 4-H stories to your local newspaper
- Create a flier about your club and place these in places where families will see them. (If you would like a template for a flier, please contact our office.)
- BE CREATIVE!!

Graduate Acknowledgement

Following the Animal Scramble on Sunday, August 14 at 1 pm at the Fair we will be acknowledging the Graduating High School Seniors & 13th Year Members. Seniors & 13th Year Members will receive more information soon. Please put it on your calendar, join us there to celebrate with these kids & their families!



Youth Curriculum Survey

This is a survey to better understand the importance of 4-H curriculum for Pierce County Youth. Please have your youth take this quick 2 minute survey. Follow this link to take the survey. [Youth Survey](https://docs.google.com/forms/d/1oEoBRpICqLsw8HSozEAW8bHvqjM-fTw_GiuuikQKRok/edit?ts=6266d43a) https://docs.google.com/forms/d/1oEoBRpICqLsw8HSozEAW8bHvqjM-fTw_GiuuikQKRok/edit?ts=6266d43a

Adult Curriculum Survey

This is a survey to better understand the importance of 4-H curriculum for Pierce County Volunteers. Please take this quick 2 minute survey. Follow this link to take the survey. [Adult Survey](https://docs.google.com/forms/d/1LfexLGJZJBt2E6QBO-eTyZCbmoX-xFkb-Wj8gwMatSk/edit?ts=6266d47d) <https://docs.google.com/forms/d/1LfexLGJZJBt2E6QBO-eTyZCbmoX-xFkb-Wj8gwMatSk/edit?ts=6266d47d>

REMINDER:

4-H LEADERS ARE VOLUNTEERS!

Remember that the 4-H is ran by individuals that are giving of their time to help your child. They also have jobs, families and other responsibilities. Please be sure to thank them for their service and lend a hand. Thank you!



Cat Project

Pierce County Fair Cat Show

Friday, August 5 at 9am
In the lower Round Barn

Any questions contact the Cat
Superintendent,
Wendy Smith



Photography Project

Photographers the Pierce
County Superintendent
has asked that you label
your photo entries with
the class and lot # on the
top of the tag board. Ex-
ample: class B, lot 3
would be written: B-3



Horse Project

- August 2—Committee Meeting
- August 3—Mock show—Pleasure
- August 4—Mock show—Gymkhana
- August 5—Mock show—Jumping 6-8
- August 7—Mandatory Barn Clean up
- August 9—Hippology 5-7pm
- August 10—Horse Check in
- August 11—Performance, Therapeutic, Mini, Draft,
Over Fences, Driving Show
- August 12—Pleasure Show
- August 13—Gymkhana Show
- August 14— Fun Show
- August 28—Districts—St. Croix County



Fundraise for Pierce County 4-H by shopping on Amazon by using AmazonSmile!

Remember, if you want AmazonSmile to donate to Pierce County 4-H you can do it by searching "Board of Regents of the University of Wisconsin System, Ellsworth, WI" you need to start each shopping session with the AmazonSmile turned ON in the Amazon Shopping app or on the website, and Amazon will donate 0.5% of the price of your eligible purchases.



Pierce County 4-H is now on Facebook & Instagram!!

This will be another way to communicate up to date information and events and learn more about Pierce County 4-H!

Be sure to follow the Facebook page here:
Pierce County 4-H - Wisconsin

<https://www.facebook.com/piercecounty4HWI>



Be sure to follow the Instagram page here:
piercecountywi4h

<https://www.instagram.com/piercecountywi4h/>



The Junior Dairy Judging Team had an amazing state competition this past Monday.

Braeden Bechel placed 2nd overall

The team placed 5th overall

Braeden placed 5th in Ayrshires

Olivia placed 2nd in Holsteins

The team placed 1st in Holsteins

Way to go Pierce County!!



Food Stand Work Shifts--2022

Order Takers & Fillers: 6-9 (2-3 per window) 3rd grade and above	
Cashier: 1-2 adults	Ice Cream: 1-2 people 12+ yrs.
Convection Oven: 2-3 people, 16+ yrs	Restock: 1 person +16 yrs.
Hot dogs/brats: 1 person, 16+ yrs	Leonade/Tea Maker: 1 person, 12+ yrs
Garlic Bread/Spaghetti: 2 people, 16+ yrs	Table washer/Trash: 1 adult, 1-3 cloverbuds & explorers
Quesadilla 1 adults	Shakes: 1 person 12+ yrs
Chicken Strips 2 adults	Total Needed: 21-29
Saturday, August 6	
8:00 am - 3:00 pm	Country Partners
Sunday, August 7	
9:00 am - 6:00 pm	Merri-Heirs
Monday, August 8	
9:00 am - 4:00 pm	Elm Valley Patriots
3:30 pm - 8:00 pm	Maiden Rock Rockets + 4 Trip/National Attendees
Tuesday, August 9	
9:00 am - 3:30 pm	Fancy Doers + Mann Valley + Royal Rushers
3:00 pm - 9:00 pm	Helpful Workers + Helping Hands + 3 Trip/National Attendees
Wednesday, August 10	
9:00 am - 2:00 pm	Rock Elm Skyrockets + Denim & Dust
1:30 pm - 6:30 pm	Heartland Hustlers
6:00 pm - 10:30 pm + clean up	Big River Defenders
Thursday, August 11	
8:00am-2:00 pm	Busy Fingers
1:30pm-7:00 pm	Valley Eagles
6:30 pm - 10:30 + clean up	Country Partners
Friday, August 12	
7:30am-11:00 am	River Ramblers
10:30am-3:00 pm	Town-N-Country
2:30pm-7:30pm	Town-N-Country
7:00 pm - 11:00 pm + clean up	Cat, Dairy, Horse, Llama, Photography, Shooting Sports, Small Animal, Robotic Members & Committees-Need 44 adults & members to fill this shift.
Saturday, August 13	
7:30am-11:00 am	Falcon Falls + 2 Trip/National Attendees
10:30am-3:00 pm	Martell Rushers + Soaring Eagles
2:30 pm - 7:30 pm	Olivet Otters
7:00 pm - 11:00 pm + clean up	St. Croix Stars
Sunday, August 14	
7:30am-11am	Merri-Heirs
10:30am - 4:00 pm	Olivet Otters
4:00 pm - Done	Food Stand Committee
Each Club needs to provide an Adult Coordinator for the shift -- somebody who will oversee their club during the shift. They will work with the Food Stand Supervisor to be sure everything runs smoothly.	

Fair planning time is upon us. Attached is the Food Stand schedule for this year. You may notice some changes from years past, however, we tried to plan the schedule to best accommodate everyone. This year you will be expected to work an additional shift above and beyond your clubs scheduled shift, as a State Trip Award Winner/National Shooting Sports Participant or committee/project members that received additional funds from the Adult Advisors. The Food Stand fundraiser really needs as much effort and generosity of the youth, volunteers, and 4-H families to help it continue to be the biggest and most successful fundraiser for Pierce County 4-H each year! By doing so, Adult Advisors can continue to support State Trips, Shooting Sports Nationals Participation, 4-H Camps, scholarships and funding to 4-H committees and project areas. Please fill out the link below for your extra Food Stand shift.

State Trip Award Winner/National Shooting Sports Participant: <https://www.signupgenius.com/go/10CoE48ABAE28A5F4C52-trip>

Committee/Project Members: <https://www.signupgenius.com/go/10CoE48ABAE28A5F4C52-project>

SHOOTING SPORTS

2022 Central Workshop, Marshfield, WI

Date: September 17, 2022

Time: 8AM – 5PM

Disciplines: Archery, Coordinator, Muzzleloader, Pistol, Rifle/Air Rifle, Shotgun



Pistol/Air

Registration Deadline: September 9, 2022 registration info found here:

<https://4h.extension.wisc.edu/opportunities/projects/shooting-sports/leader-certification-training-workshops/>

Payment will be done through the Brown County Extension webpage – information about payment will be included after you fill out the registration form above.

Location: Central Wisconsin Sportsmen's Club, 11841 Stadt Rd, Marshfield, WI 54449

Leader Re-Enrollment

All re-enrolling 4-H volunteer leaders will need to comply with the following training requirements:

- Annually sign the 4-H Volunteer Expectations Form (part of re-enrollment through 4-HOnline)
- Federal background check (every 4 years) - you can complete this online or via paper
- Mandated Reporter Training (all volunteers must complete this at least once)
- Title IX Reporting Training (all volunteers must complete this at least once)
- Supporting Youth Mental Health Training (all volunteers who are planning on being a 4-H chaperone)
- Shooting Sports Training (requirement for any volunteer wishing to assist with the shooting sports program)

Looking for Fun Activities for your 4-H Club or Group? Activity Videos now Available!

Looking for a way to add some fun to your club meetings? Need an activity idea to help build a sense of belonging? The Wisconsin 4-H Leadership Council, Wisconsin 4-H Drama Company and Wisconsin 4-H Art Team created these short videos to share an example of a game or activity that you can use with your club or group.

The videos with instructions are available now on the Extension YouTube channel: https://www.youtube.com/playlist?list=PLWYkTfJ_LDJYh695VvTZ_hXOTNS-xLuIJ

The activities are easy to do, require very little for supplies and can add a lot of fun to a meeting!



OLIVET OTTERS 4-H CLUB NEWS

Family & friends at Fawn-Doe-Rosa. We booked an educational tour & the kids got to learn fun facts about each animal as our guide took us around the park

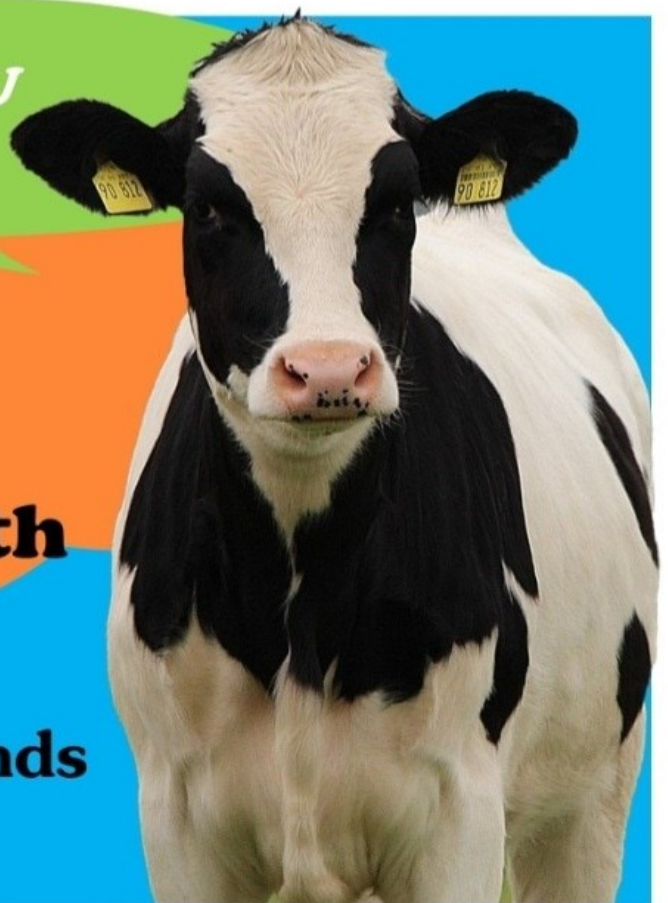


**HAVE YOU
HERD??**

The 49th Annual
**Pierce County 4-H & FFA
Livestock Auction is**

**Friday, August 12th
at 6:30PM**

**Pierce County Fairgrounds
Livestock Arena**



Important note for Pierce County 4-H members, volunteers and families.

It is important to note that Pierce County 4-H is going through what many may think of as changes.

Many of these changes are actually policies that for one reason or other were not put into place in years past or are new recently.

Pierce County 4-H follows State and National 4-H Policies. 4-H takes Youth Protection very seriously, as incidents, arise new policies will too.

We as the Adult Advisors Committee take our commitment to Wisconsin 4-H very seriously, as do many of the different organizations and county departments we partner closely with.

We must follow these policies to be considered a part of the Wisconsin 4-H program. There may be growing pains as we adapt and follow these policies.

We are working through these policies and changes and want you to support our 4-H Educator, Sky Holt, Pierce County Extension staff & all the Pierce County 4-H leaders and youth.

If you have any questions please reach out to the Adult Advisor Committee, Our 4-H Educator, Sky Holt or Pierce County Extension Staff. Please support the great Pierce County 4-H Program in this way.



EVERYONE HAS A FAIR STORY CONTEST OPEN FOR ENTRIES

Fair season is fast approaching and with it comes the memories of past fairs. Everyone has a fair story, what's yours? Maybe you got engaged at a fair, won your first ribbon, or went to your first concert. Whatever it is, we want to hear it! The **Mid-West Farm Report** is teaming up with the **Wisconsin Association of Fairs** to capture fair memories across generations and across the state to share leading up to fair season. Two winners will be selected; a **Grand Champion** Winner will receive a premium of **\$500** and a **Reserve Grand Champion** will be named and awarded **\$250**. Use the link below to submit your official application. You can record yourself on audio or video, or capture it in writing. Submit your stories today! The Wisconsin Fair Season runs the end of June to the end of September.

<https://www.midwestfarmreport.com/everyone-has-a-fair-story/>

2022-2023 4-H Enrollment

Enrollment for our new 4-H year opens **September 6, 2022!**

- ◆ All youth grades K—13th are welcome to enroll in Pierce County 4-H.
- ◆ Enrollment will be open from Sept. 6—Nov. 1 for all current 4-H members.
- ◆ All members must enroll in at least one 4-H project.
- ◆ K—2nd graders are only eligible to enroll in the Cloverbud project
- ◆ 3rd grades may only take one animal project
- ◆ New members can enroll anytime.
- ◆ March 1 is the enrollment deadline to be eligible to show at the Pierce County Fair under the 4-H name
- ◆ March 15 is the deadline to add/delete projects

To enroll go to www.4HOnline.com and log in to your account. Make sure you hit the submit button when you are finished.



Salute to Excellence - Nominate a Volunteer

Wisconsin 4-H has many outstanding volunteers! Here is your opportunity to nominate someone from your county or tribal nation to be considered for the Outstanding Lifetime Volunteer or Volunteer of the Year Award.

4-H Volunteer Categories:

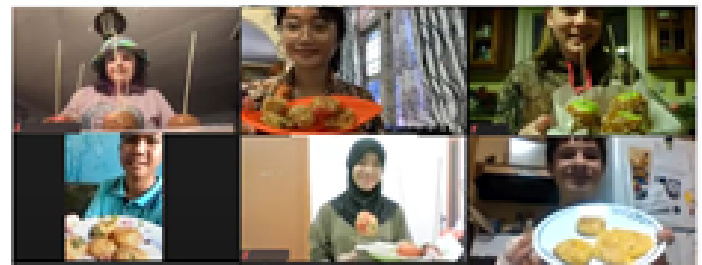
- Outstanding Lifetime Volunteer Award - 10 or more years
- Volunteer of the Year Award - less than 10 years



**4-H Salute to
Excellence
Awards**

Wisconsin 4-H will recognize two volunteers on November 5 at Fall Forum. All entries must be submitted by September 30. To nominate go to <https://4h.extension.wisc.edu/salute-to-excellence/>

4-H Youth Make International Connections Through Pen Pal Program



For the second consecutive year, a partnership between Wisconsin 4-H and Tabur Kencana Nusantara provided opportunities for over forty youth in Wisconsin and Indonesia to connect and learn from each other through the Spring 2022 Pen Pal Program. Participants were between the ages of 14 and 18 and represented twenty different counties and nearly a dozen islands in Indonesia.

Wisconsin participants were matched with an Indonesian participant based on age and self-identified interest. Participants wrote to their international counterparts throughout the duration of the program. Building upon the successes and feedback from the 2021 Wisconsin/Indonesia Pen Pal Program, six "Zoom Connect" sessions were held for all participants to have a chance to connect, learn from, and learn with one another. The first two sessions focused on language where Wisconsin participants were able to learn common greetings and phrases in Bahasa Indonesian, while Wisconsin participants taught popular American slang and phrases. The third and fourth sessions gave participants an opportunity to share an aspect of their own culture that is meaningful to and engage in discussion regarding the similarities and differences of schooling between Indonesia and the United States. Topics of particular interest were winter sports such as skiing and ice-fishing, experiences that the Indonesian youth were not too familiar with due to living in a tropical climate. During the final two sessions, Wisconsin participants had the opportunity to cook Perkedel, a type of potato croquette common in Indonesia, while a Wisconsin participant led everyone in making homemade caramel apples and caramel apple sundaes.

To be the first to hear about upcoming opportunities and programs, or to learn more about WI 4-H International and Global Citizenship Programs, please complete this brief [form https://docs.google.com/forms/d/e/1FAIpQLScr-aaA1bYuQDMQrx31RlvrOT-syBLCYqAsQh3GsarX_Dt0hg/viewform](https://docs.google.com/forms/d/e/1FAIpQLScr-aaA1bYuQDMQrx31RlvrOT-syBLCYqAsQh3GsarX_Dt0hg/viewform) or visit us at wi4hinternational.org.

MN TOUR 2022

4-Hers from Pierce, Polk & St. Croix Counties toured MN. They did community service project at Feed my Starving Children, Tour a Wabasha Caves, a tour at the St. Paul Saints Field & got to know friends from other counties.



Does your 4-H Club or Committee need to use a building, space or area at the Fair grounds?



You must reserve the space, building or area by following this Google link and filling out the form. It will only take 3 minutes. We will let you know if your request is approved. It must be approved by the Fair & Extension.

Let us know if you have any questions. Call or email 715-273-6871 april.daniels@wisc.edu

https://docs.google.com/forms/d/e/1FAIpQLSc9FmojhNh8isNgJokfVqtc_6te5WhnZ5-d09iAkKi7HbvYcg/viewform

Avian Bowl Practice Schedule

Avian Bowl participants will practice on Thursdays from 6-7 pm August 4, 18 and 25th. We plan to meet in September 3-4 times but haven't set dates yet since school may change availability.

Meet at Pablo's home, please email Charlotte Roth at equidgirl@gmail.com if you want to join and need directions to the Pablos. Also please reach out if you want to join but the schedule is an issue or if you have any questions. You do not have to make every meeting and if the time/dates don't work for you we can possibly adjust our schedule.



WI 4-H STATE DOG SHOWS

(AGILITY, SHOWMANSHIP,
OBEDIENCE, AND QUIZ BOWL)

Save the Date

**SEPT. 30, OCT. 1, &
OCT 2, 2022**

**HOSTED BY DANE CO. 4-H DOG PROJECT
AT THE JEFFERSON CO. FAIRGROUNDS**



Extension
UNIVERSITY OF WISCONSIN-MADISON



I pledge...

my **head** to clearer thinking,
my **heart** to greater loyalty,
my **hands** to larger service, and
my **health** to better living for
my **club**, my **community**,
my **country**, and my **world**.

Pierce County Shooting Sports News

PARTICIPATION FEES & REGISTRATION FORM

All youth participating in the Pierce County 4-H Shooting Sports program are required to fill out the online registration form & pay a shooting sports project fee of \$10/member (\$30 family cap) before they are eligible to shoot for any of the fair shoots.

If you have not yet filled out this form please to do so at: <https://forms.gle/hxviz5kSpZ6djNeG9>

Fees can be paid at the practice shoot on August 4th, on the day of the fair shoot, or brought in to the Extension office NO LATER than August 1st.

PRACTICE FAIR SHOOT FOR ARCHERY, AIR PISTOL & AIR RIFLE:

Thursday, August 4th 6:30-8:30pm Drewiske Building - PC Fairgrounds

- Open ONLY to those entered in a bullseye or silhouette shoot for the archery, air rifle &/OR disciplines for the fair!
- This will count as a practice for those of you who may need it.
- There will NOT be an advance sign up for this event. It will be first come, first served & shooting time may be limited. You MUST sign in for each discipline you are shooting.
- Come ready to shoot. Instructors will not be available to move sights, work on bows or do adjustments. This must be done BEFORE you come!
- Pierce County Air Rifle & Air Pistols must be used for all fair events
- We will be practicing with bull targets only - There will not be silhouettes for practicing at this event.

Pierce County 4-Hers competing around Wisconsin & at Nationals in Grand Island, NE.



National 4-H Shooting Sports Invitational, Pierce County Competitors & Coaches.

<----->

Pierce County Youth Competitors at the Triple Crown Statewide Invitational in Marshfield ----->



Pierce County Youth Competitors at the Shawano County 4-H All Star Summer Shootout in Shawano. ----->



Pierce County Youth Competitors at the Annual Triple Crown Summer Blast in Marshfield

<----->



Pierce County Shooting Sports News

Fair shoots Schedules: Dept 16J Classes R-Z

Again, Please read the complete list of the Fair Shoot rules & descriptions for these classes in your Pierce County Fair Book.

Appropriate 4-H dress code and footwear will be enforced. No short shorts (must be past the fingertips), spaghetti straps, or inappropriate logos, etc. Must wear closed toed shoes. No sandals or Crocs allowed. Long hair should be pulled back.

*****BE SURE TO HAVE YOUR ENTRY TAGS ALONG WHEN YOU COME TO SHOOT*****

Saturday, August 6th

- ALL Powder Burning Events & ALL Silhouette Classes (Air Rifle & .22 Rifle)

River Falls Sportsmen's Club, 1130 - Rifle Range Road, River Falls, WI 54022 Registration 8am-1pm. Shooting begins at 9am.

- Ranges will be open 9am-3pm (unless otherwise noted). If you are shooting multiple disciplines, please plan accordingly. DO NOT wait until the last minute to register & begin shooting!

*****ALL TIMES ARE TENTATIVE & SUBJECT TO CHANGE. You will be notified via email of any changes*****

- Muzzleloader (100 yard range). Approximate range times to begin at 9am, 11 am & 1pm (only if needed). There is only room for FOUR shooters at a time. A pre-registration will be sent out for this discipline ONLY so we can plan accordingly.
- Shotgun: (Trap range) Throughout the day, as lines fill. We will try to run full lines as much as possible.
- Smallbore .22 Rifle Bullseye Shoot (50 yard range) - last line to begin at 1PM
- Smallbore .22 Pistol (50 yard range)
- Smallbore .22 Rifle Silhouettes (50 yard range) - following the Bullseye Target Shoot, approx 2PM
- Air Rifle Silhouettes: (Archery Range)

Sunday, August 7th

- ALL Archery, Air Pistol and Air Rifle Bullseye target shoots

Pierce County Fairgrounds

Drewiske - Archery Events. Shooting begins at 9am

Arena - Air Rifle and Air Pistol Events. Shooting begins as lines are filled.

- Registration FOR ALL events: 9am-1pm in the Drewiske Barn.

Tuesday, August 9th

- Dept 16J Class AA: Wildlife/Ecology Challenge

Pierce County Fairgrounds

Seyforth Building- Check in Between 1-7pm, allow 30-45 minutes to complete.

Register with Peggy Larson in the Cultural Arts Dept.

If you have any questions about shooting sports please feel free to email us at:

piercecounty4hshootingsports@gmail.com or by calling Kevin & Peggy Larson at 715-778-4737 or Brian & Deanna Hines @ 715-273-4583.

YOUNG EAGLES DAY



It was a great day of learning about aviation & STEM. Thanks for coming out!
Parents & 4-Hers, Follow the link for more information on how you can learn more about the EAA
Young Eagles Program

<https://www.eaa.org/ea/youth/free-yeflights/ea-young-eagles-information-for-parents>



Livestock Information

Drewiske Building Wash Rack Raffle

Sheep, goat & swine exhibitors are still selling raffle tickets to help raise the funds for this! The tickets are \$5 each or a book of five for \$20. Please consider purchasing some tickets! The drawing will be held on August 12th at 6:15pm just ahead of the Livestock Auction.



Turning in raffle money - Raffle money & stubs can be turned in anytime to Gina Klecker at the Ellsworth Coop Creamery. Gina can be found at DOOR #8, Monday - Friday from 8am-4pm. You may also turn in the money & stubs at the Extension Office during normal business hours of 8:30 - 4:30, Monday - Friday (It is always a good idea to call ahead of time to be sure that someone is in the office, 715-273-6781). **All stubs & money & any unsold tickets are due by August 7th (pen set up).**

DREWISKE BUILDING PEN SET UP (& VOLUNTARY MEETING)

All goat, sheep & swine exhibitors are asked to come & help with pen set up on Sunday, August 7th at 5pm following the Archery Competition. We will not be having a required pre-fair meeting as we have in the past, however, we will have a brief meeting following pen set up to better explain the unloading and washing procedure that will take place during the fair. Participation is recommended but completely voluntary.

IMPORTANT DREWISKE BUILDING INFORMATION:

Due to the washracks & unloading areas still being under construction, there is going to be an alternate plan to unload & wash animals at the fair. Unloading will be on the opposite side of the Drewiske Building near the scale house. Complete information will be emailed out to all exhibitors soon. Please watch for this email.

PLEASE NOTE: Because of this alternate plan NOTHING can be left between the Drewiske Building and the Arena Barns. Cattle chutes and show items can be used for the day but cannot be left while not in use or overnight. Also sheep, goats and swine will need to come to the fair clean as washing will be minimal.

TACK SPACE AT THE FAIR:

We have a lot of animals coming to the fair this year which is a good thing! However, this means space will be tight & there likely will not be room for tack space inside the barns. If there is, the spaces will be very limited & minimal tack will be allowed. All animal exhibitors should be prepared to bring feed, bedding, etc in on a daily basis. Tack, bedding, etc may not be piled in the aisles or outside of the barns. If your animal number has changed since originally reported please be sure to be in touch with species superintendents.

SWINE SUPERINTENDENT CHANGE:

Deanna Hines has agreed to step in as the co-superintendent along with Ray Timm. If you have any swine related questions feel free to call her at 612.987.9584.



Fair Paperwork for Livestock Participants:

Be sure you have all your paperwork in order when you come to the fair!

- Animal ID form** - This form needs to be filled out BEFORE you come to the fair. Be sure to put the full tag numbers on it & if you are bringing more than one species on the same truck you will need a copy of the form for each species superintendent. It is available on our website at www.piercecountylivestock.weebly.com.
- Drug Sheets** - ALL meat exhibitors are required to have a drug sheet filled out for each animal being brought to the fair -These were emailed out & are available on our website listed above.
- “Extras” Destination sheet** - this sheet needs to be filled out for any extra animals going to processing from the fair. This sheet is due NO LATER than NOON on August 13th. It can be handed in upon arrival or in the drop box on the scale house. These sheets were emailed out to all meat animal exhibitors but extra sheets will be available at the fair as well. ** No “For Sale” signs for extra animals will be allowed until AFTER the auction.

Additional requirements for Beef Exhibitors

- Exhibitors showing registered beef must have their registration papers
- Also, please text Katie Christenson at 715-768-9070, she would like to have as many contact numbers for families as possible.



Additional requirements for Goat Exhibitors

- Exhibitors showing registered Goats (ADGA, AGS, ABGA, etc) must have a **copy** of their registration paper. These animals are also required to be tattooed or microchipped with their registration information.
- All unregistered goats are to have a scrapie ear tag.



Additional requirements for Swine Exhibitors

- Be sure you call a veterinarian to come out & get your animals inspected prior to the fair so you can get your **Intrastate Health Certificate**. (AKA “pink Sheet”). This pink sheet will need to be handed to the Swine Superintendents along BEFORE unloading at the fair.
- Ractopamine (Paylean) Affidavit** - this form was emailed out & must be filled out by all exhibitors & must also be handed in to the Swine Superintendents along BEFORE unloading at the fair.
- Don't forget our fair is terminal for all hogs. Please make sure you have someone lined up to take any animals you have that are not going to be sold on the auction. Also be sure to have a back up buyer for any animals that may be sold premium. Again, be sure to fill out the “Extras” Destination sheet for these animals

Additional Fair related items:

- Be sure to check the fairbook for entry times, weigh in & Ultrasounding times and show times!
- Barn decorating - per the fairbook, barns (except silver barn) can be decorated on Monday, Tuesday or Wednesday between the hours of 2-9pm. Keep in mind that there may not always be someone there to watch the barn so please do not leave any valuable items. Also, please remember that **nothing** is to be removed from the barns until 4:30pm on Sunday! This includes any tack, waterers, feeders, etc.
- Don't forget to bring bedding, feed & supplies you will need to keep your animals at the fair. However, please remember to limit the amount of feed & bedding you bring. Only being enough for a day or two at a time. Extra items are not to be piles outside of the barns either.
- Please keep stalling & tack areas clean! If there is room for tack, we don't mind if you have extra items such as chairs & such in your area (as long as there is room) However, please be sure they are kept neat. Too many times we see lots of clutter & garbage in tack areas. Nothing is to be sitting in the aisle ways.
- Be sure to keep outside spaces clean as well! Please be sure to pick up after your animals and yourselves.

Pierce County Livestock Committee Meeting

Our next meeting will be held on August 29th at 7pm in the Ag Room of the Ellsworth High School. Meetings are open to all 4-H & FFA members as well as any volunteers that would like to come.



Be sure to follow us on Facebook &/or Instagram or check out our website at: www.piercecountylivestock.weebly.com for more events that may pop up between newsletters. As always, feel free to email the livestock committee if you have questions. Our email is: piercecountylivestockcommittee@gmail.com

LIVESTOCK JUDGING



Second place over all Sr. team, Cora Capatske, Cadie Asher, Zack Peterson, and Jordan Lamb.



Individual TOP 10 results Seniors: Cora Capatske-2nd Overall, Jordan Lamb- 5th Overall



Third place over all Jr. team, Milo Shafer, Tyler Neidermyer, Tessa Asher, & Toby Shafer.



Individual TOP 10 results Juniors: Milo Shafer-1st place

Congratulations to all Pierce County livestock judges who competed at the State 4-H Livestock Judging contest.

Coached by Megan Geraets & Caleb Dressen, the junior team consists of Milo Shafer, Tyler Neidermyer, Addison Neidermyer, Adam Capatske, Tessa Asher, & Toby Shafer.

Coached by Megan Geraets and Caleb Dressen, the senior team consists Cora Capatske, Cadie Asher, Zack Peterson, and Jordan Lamb.

NATIONAL 4-H CONGRESS

OVERVIEW

A five-day educational experience to meet with other 4-H youth from around the US, Canada, and Puerto Rico to engage in leadership, citizenship, global awareness, and inclusion.



LOCATION & DATES

National 4-H Congress will take place from November 25-29, 2022 in Atlanta, Georgia. Registration is open from July 1 - August 1, 2022.

REQUIREMENTS

- 4-H members 9th-12th grade at registration
- maximum age 18 as of January 1, 2022
- youth can only attend once as a delegate



REGISTRATION OPENS SOON!

For more information, contact Justin Lieck, Educational Programs Assistant at justin.lieck@wisc.edu or 608-263-5971 or visit <https://go.wisc.edu/727h67>

DOG PROJECT

BE SURE TO WATCH YOUR EMAIL FOR INFORMATION FROM THE DOG PROJECT LEADER.

PIERCE COUNTY FAIR DOG SHOW SCHEDULE

Saturday, August 6, 8:30—Puppy Manners

Saturday, August 6, 9:00—Obedience

Saturday, August 6, After Obedience—Rally & Trick

Monday, August 8, 8:30—Showmanship

Monday, August 8, After Showmanship—Agility



Dogs learn obedience. Kids learn responsibility.

The Hunger Prevention Council of Pierce County is looking for a group to "adopt" the Pierce County Food Pantry garden in 2022 and beyond. In 2021 a garden and fruit trees were planted at the Pierce County Food Pantry to supply food pantry clients with fresh produce. The garden is doing great and the clients are loving the produce. A group is needed to take over the general upkeep of the garden - watering, weeding, harvesting, and fall clean-up. If your group is looking for a service project this could be for you! Contact Katie Bartko at 715-561-1934 or katie.bartko@wisc.edu to learn more.



Extension
UNIVERSITY OF WISCONSIN-MADISON

Cloverbud & Explorer Day

14 4-Hers had a blast learning about trees, pond life microorganisms, making crafts, swimming and making new friends.



CLUB BASKET SILENT AUCTION FUNDRAISER AT FAIR AGAIN FOR 2022

Each club is again asked to donate a fun basket to be part of a silent auction at the 2022 Pierce County Fair. All proceeds will go to Pierce County 4-H programming! We had some very creative baskets last time so start planning your club basket now!! Winning club gets a DQ Cake!

**Please turn them in to the
Extension Office by August
5th to be considered.**



Rabbit Project

Pierce County Rabbit Show
Tuesday, August 9 at 9 am
Pierce County Rabbit Agility Show
Friday, August 12 at 3 pm



Text or email Laura with any questions.
651-380-2350 Laura@kingofthehill.org

Notes from the Pierce County Fair Office – August 2022

We are excited for the upcoming fair! We have listed some details for the fair; however, *please refer to July's Informant for all the details!*

100 Volunteers Needed - We Need Your Help at the Fair!

The fair is approaching fast, and the time has come to recruit volunteers to help out in project areas at the fair. PLEASE, PLEASE, PLEASE help us out. We need helpers in every area. From the Cat Show on Friday, August 5th, to Friday of the Fair, August 12th. We especially need help during entry and judging days on Tuesday, Wednesday and Thursday of the fair (August 9th-11th).

Helping at the fair looks great on record books, Award Trip forms, Ambassador Applications, and a great way to help out in the community.

Also, if you're a mom looking for a way to spend some time in the office (it's air conditioned), we need Front Desk Helpers! Basically, it involves answering the phone, sharing customer information, and helping with dispersing plaques.

Please let Ashley know when you are available to help via email or phone call. In your email, please include the day, time, and departments in which you wish to help along with a daytime phone number! Thank you in advance! ashley.plahn@co.pierce.wi.us 715-273-6874 x [6599](tel:6599) Pierce County Fair Summer Assistant - 364 North Maple- Box 922, Ellsworth WI 54011

Herdsmanship

The Livestock Committee has graciously agreed to manage this program; so, it is back on! For more information contact Katie Christenson.

4-H Fair Signs

Thank you to the following 4-H clubs for advertising the fair! Your artwork and enthusiasm is incredible!

- Big River Defenders
- Elm Valley Patriots
- Falcon Falls
- Fancy Doers
- Maiden Rock Rockets
- Martell Rushers
- Merri Heirs
- Olivet Otters
- River Ramblers
- Town N Country

If we have missed anyone, please let us know by emailing liz.dietsche@co.pierce.wi.us

Fair Exhibit Tag Pick-Up

ALL Fair tags (Jr. Fair and Open) will be available for pick up at the FAIR OFFICE in the Seyforth Building ON THE FAIRGROUNDS during the following hours:

- Starting Monday, August 1st – Thursday, August 4th – 8:30am – 4:30pm & Friday, August 5th – 8:30am - 2pm

Extra Hours for Pick-up:

- Saturday – August 6th – 7:30am – 12:30pm
- Sunday – August 7th – 10am – 12:30pm
- Monday, August 8th - 8:30am – 6pm
- Tuesday, August 9th – 8:30am – 8pm
- Wednesday, August 10th – 8am – 8pm



Make a plan to pick up your exhibit tags. Check with club leaders as some do pick-up the entire club tags to have available at upcoming meetings. Exhibit tags and passes will be in the same envelope. Season passes are not replaceable if lost, so please keep track of them.

Pick-up your exhibit tags early and review them for errors. **DON'T WAIT!!** If there is an error, contact the Fair Office immediately at 715.273.6874.

- If there is a fair administration error, you will receive a PINK Correction Form and receive full premium.
- If you, the exhibitor, change classes, but the entry tag matches your entry form, you will receive a BLUE Correction Form. You can show for the correct ribbon, but will receive a pink premium and not be in consideration for Champion.

Each exhibit must have a tag. Be sure to follow instructions in the Premium Book in displaying your tag. Superintendents and helpers are available only in the timelines indicated in the Premium Book on pages 2-5.

We wish you all the best of luck and we will see you at the Pierce County Fair!

Notes from the Pierce County Fair Office – July 2022

Pre-Fair Event – MotoCross – Friday, July 22nd, 2022 @ 7pm

Pierce County Fair – August 11th thru August 14th, 2022

Pierce County Fair 2023 – August 10th thru August 13th, 2023

Fair Event Schedules and other information may be found at:

<https://www.co.pierce.wi.us/departments/fair/index.php>

- Advanced Season Admission Tickets - \$12
- Advance Carnival Ride Tickets 4 tickets for \$10 available at Fair Office or area businesses before the fair.

Welcome to the Team! We are excited to welcome the following people to the Fair Office Administration Team: Ashley Plahn – Summer Assistant, Sherrie Waxon - Summer Office Coordinator, and Sandra Goulette – Interim Office Assistant. We are all excited to work with our Pierce County Fair Exhibitors and Fair Patrons!

We (The Pierce County Fair) are looking for people to fill shifts in the following areas:

- Fair Crew
- Tickets & Parking
- Beer Garden Supervisor

Please contact Liz Dietsche, Fair Manager, at 715.273.6874 or liz.dietsche@co.pierce.wi.us or Ashley Plahn, Summer Assistant, at ashley.plahn@co.pierce.wi.us

Fair Exhibit Tag

ALL Fair tags (Jr. Fair and Open) will be available for pick up at the FAIR OFFICE in the Seyforth Building ON THE FAIRGROUNDS during the following hours:

- Starting Monday, August 1st – Thursday, August 4th – 8:30am – 4:30pm & Friday, August 5th – 8:30am - ? 2pm???

Extra Hours for Pick-up:

- Saturday – August 6th – 7:30am – 12:30pm
- Sunday – August 7th – 10am – 12:30pm
- Monday, August 8th - 8:30am – 6pm
- Tuesday, August 9th – 8:30am – 8pm
- Wednesday, August 10th – 8am – 8pm

Make a plan to pick up your exhibit tags. Check with club leaders as some do pick-up the entire club tags to have available at upcoming meetings. Exhibit tags and passes will be in the same envelope. Season passes are not replaceable if lost, so please keep track of them.

Notes from the Pierce County Fair Office – July 2022

Pick-up your exhibit tags early and review them for errors. DON'T WAIT!! If there is an error, contact the Fair Office immediately at 715.273.6874.

- If there is a fair administration error, you will receive a PINK Correction Form and receive full premium.
- If you, the exhibitor, change classes, but the entry tag matches your entry form, you will receive a BLUE Correction Form. You can show for the correct ribbon, but will receive a pink premium and not be in consideration for Champion.

Each exhibit must have a tag. Be sure to follow instructions in the Premium Book in displaying your tag. Superintendents and helpers are available only in the timelines indicated in the Premium Book on pages 2-5.

There are over 11,000 items entered at the Pierce County Fair. This is how we track them.

Lost/Destroyed Junior Fair or Season Tickets

Visitors and exhibitors are required to show their admission tickets each time of entrance. Transfer or loan of tickets will be considered fraud and will subject the offender to a fine of \$25. A lost ticket will not be replaced without purchase. Unused tickets will not be refunded.

Barn Permits

For those Junior Fair Exhibitors who have animals and are Grade 6 or older, overnight permits may be obtained from the Fair Office by 8:00 p.m. each evening. The exhibitors may stay only in the barn where their animal is housed. Separate permits are needed for each night, but can be issued all at the same time. The Junior Fair exhibitor's parents or legal guardian must sign regardless of the exhibitor's age.

Any unruly conduct such as use of cigarettes, cigars, pipes, illegal drugs, alcohol, abusive language, violent tempers, or intimate physical relations is not allowed. Youth have a midnight curfew. Disciplinary action for failure to comply with the permit procedure, conduct rule or curfew will result in immediate removal from the Fairgrounds, revoking of further overnight privileges and loss of animal premiums.

Volunteers - We Need Your Help at the Fair!

The fair is approaching fast, and the time has come to recruit volunteers to help out in project areas at the fair. PLEASE, PLEASE, PLEASE help us out. We need helpers in every area. From the Cat Show on Friday, August 5th, to Friday of the Fair, August 12th. We especially need help during entry and judging days on Tuesday, Wednesday and Thursday of the fair (August 9th-11th).

Helping at the fair looks great on record books, Award Trip forms, Ambassador Applications, and a great way to help out in the community. Please let Ashley know when you are available to help via email or phone call. In your email, please include the day, time, and departments in

Notes from the Pierce County Fair Office – July 2022

which you wish to help along with a daytime phone number! Thank you in advance!
ashley.plahn@co.pierce.wi.us 715-273-6874 x 6599 Pierce County Fair Summer Assistant - 364
North Maple- Box 922, Ellsworth WI 54011

Removal of Exhibits REMINDER

FAIR EXHIBITS MAY NOT BE REMOVED BEFORE 4:30 p.m. ON SUNDAY, OR PREMIUMS WILL BE FORFEITED.

Also remember you MUST pick up your projects on Sunday between 4:30 and 6:30. Do not leave them at the fair. They will be unsupervised and tossed after the fair.

Face to Face Judging at a Glance (Exhibitor must be present)

This is a two-way conversation between the member and the judge. The judge will ask questions about your project, what you've learned, what was the most challenging part, etc.? Also, you may ask the judge questions that you may have. The object is for you to learn from your exhibit. Together, you'll discuss your work; don't be afraid of the judge. Judges are there to help you learn and grow.

As you work on your project activities and prepare exhibits for the fair, remember to prepare yourself, too. Conference judging includes an evaluation of both your actual exhibit, and your learning and knowledge of the exhibit. You should prepare for both parts of the evaluation. Think about what you learned in preparing your exhibit, decisions you made, why you made them, and the quality of your finished exhibit. Knowing and doing the following should help you out:

1. Prepare your exhibit carefully and neatly.
2. Know why you chose this item as your exhibit and how it fits your project.
3. Know how you prepared your exhibit.
4. Know how much the exhibit cost in time, materials and effort.
5. Be able to explain what decisions you made, and why, in preparing the exhibit.
6. Study some background information about the exhibit topic.
7. Be able to explain some of the problems you had making this exhibit and what you might do differently if you did it again.
8. Decide if the results were worth the costs and what you learned.
9. Know what other kinds of exhibits/projects you might be interested in doing in the project area.
10. Don't chew gum during the conference.
11. Look at the judge.
12. Be confident.
13. Relax

Notes from the Pierce County Fair Office – July 2022

Youth Organization (Cloverbud/Explorer) Judging Monday, August 8th at 12pm – 6pm

- Bring your exhibit to the Kenny Hines Memorial Building on Monday between 12pm and no later than 6pm
- Explorers are judged in face-to-face judging.
- All Cloverbuds exhibits will be given participation ribbons and can receive either face-to-face comments from the judge or written comments.
- Every year we have little Explorers come to the Fair Office on Wednesday or Thursday wondering where their Exploring project goes. We usually have to tell them that judging for Exploring was done on Monday, August 8th. Of course, they are sad and disappointed. Please write this on your calendar to prevent this situation.
- Be sure to ask early if you have questions.
- If you're an Explorer and taking another project you will follow the schedule in the front of the book for that other project that is not Exploring. All Exploring Projects will be judged on Monday between 12 noon and no later than 6 pm.
- All Cloverbud /Exploring/ Youth Organization project judging is on Monday in the Kenny Hines Memorial Bldg. and is face to face judged for Explorers so the Explorer must be present for judging. It is optional for Cloverbuds.

Presentations Exhibitors Check-in and Judging

If you are in Presentations (31J Classes E, and F; Speaking & Communications; or Creative Writing) please drop off projects at the Seyforth Building on Monday, August 8th anytime between 8:30 a.m. until 6 p.m. OR 8:30 a.m. - 11 a.m. on Tuesday, August 9th.

The judge will be taking time this year to do advance reading. You may come for face to face judging anytime between 1-7 p.m. on Tuesday, August 10th in the Kenny Hines Memorial Building.

Please Read Carefully!!

The Fair Premium Book has changed this year! This may result in a change from “the way things may have been in the past”. As an exhibitor, it is your responsibility to review and know your check-in and judging times (pages 2- 5), the regulations (pages 15 – 28), and the department information for your entries. **Face to Face judging** changes every two years as well, be sure to note this. We encourage all animal exhibitors to use earlier entry times for bringing animals to fair for the safety of everyone. For questions, contact the Fair Office at 715.273.6874

Aerospace Project Class D-F Face to Face judged 5-6 before Rocket Launch on Tuesday at 7 pm.

Notes from the Pierce County Fair Office – July 2022

Herdsmanship

Due to a lack of personnel, we will NOT have herdsmanship contests this year in any animal area. We expect a diligent effort in keeping all animal exhibit areas neat and clean regardless!

Little Shepherd Show

The Little Shepherd Show will be at 1:30pm following the Swine Show.

Exhibitors in Blue, Silver and Arena Barn

This is a REMINDER! Couches & Picnic Areas are strictly prohibited in these areas. All prohibited furnishings will be removed from the barns by the Fair Groundskeeper if found.

Animal ID & Check-In Times

- Complete all Animal ID forms PRIOR to arriving at the fair. Forms are found in the Premium Book (also on website) on pages 116 & 118.
- Animal ID & Check-In Information Forms MUST be given to the Superintendent prior to unloading all animals at the fair. **Separate forms are REQUIRED for each species.**
- Check-in Times are listed in the Premium Book on pages 2-5.

Animal Exhibit Fair Entry & Exit

- **When bringing fair exhibit animals, EVERYONE MUST follow the same entrance and exit procedures!**
- **Dairy, Beef, Swine, Sheep, & Goats will ENTER through the EAST Gate and EXIT out the NORTH Gate.**
 - **Dairy & Beef Exhibitors** must enter the Cattle Arena through the EAST end.
 - Proceed to the MIDDLE of the Show Ring for the Vet Check, following Vet Approval, animals may be unloaded.
 - Exit out the WEST end of the Cattle Arena leaving the fairgrounds through the NORTH Gate.
 - Unloading animals through the east side doors is NOT permitted.
 - **Swine, Sheep, & Goat Exhibitors** use the unloading area on the NORTH side of the Drewiske Barn.

Load Out Times – Sunday – August 14th – Market Animals ONLY

- Beef – 2pm
- Sheep - 3pm
- Swine – 3pm
- All other animals or above animals not going to market – 4:30pm Dairy & Beef

Exhibitor Wash Rack & Manure Bunker Info

All Dairy and Beef Exhibitors need to help in keeping the area between the wash rack, milking parlor, manure bunkers and barns clean. If your critter leaves a "Present" on the way to or from the wash rack or milking parlor, please come back to clean it up.

Notes from the Pierce County Fair Office – July 2022

When you put your wheelbarrow into the bunker, please clean up the area around it and put it in as far as it can go. This area has become too littered with “Presents and Bedding” that are not being cleaned up. It will enhance our fair-goers experience to see a cleaner environment. We all need to be conscience of bio-security for ourselves and fairgoers. Thank You!

Feed Drop off Limited Parking

Please be considerate of the Fair’s limited parking space when loading or unloading feed near the barns. ***Do not take more than 20 minutes*** if possible before moving your vehicle to a designated parking spot. This will help with overall traffic flow and allow everyone to enjoy the Fair. With limited barn space, only bring what you need. It is possible that you may have to store hay and bedding outside, we recommend bringing a tarp to protect from rain. Please keep our grounds looking neat.

Attention Livestock Exhibitors

Policy for Feeding and Watering Exhibitors are responsible for feeding and watering their beef/sheep/swine throughout the entire fair. ***All animals are to be fed by 10 a.m. and 6 p.m. daily.*** The Livestock Committee has adopted a policy known as the 3-strike rule. This rule (condition of animals is periodically checked and strikes will be issued each time improper care of your animal is observed) regarding feeding/watering will be enforced. After the third strike your premium for this project will be forfeited and you will not be able to show this animal species at the fair next year. All animal areas including Dairy, Goat, Horse, Rabbit, and Poultry as well as Livestock should follow the feeding and watering guidelines. If you have questions about this rule, please contact the superintendent of your species area. Best of luck to all of you at the 2021 Pierce County Fair!

Intrastate Health Certificate for Swine

Remember that all swine must have an Intrastate Health Certificate in order to unload at the fairgrounds. Check with your veterinarian and obtain the certificate well-before coming to the fair.

Terminal Swine Show

The 2022 Swine Show will be a terminal show. Swine may not return to the farm after the fair.

Auction Animals Must Be Ready Friday Afternoon

All 2022 Pierce County Fair Auction participants **MUST** have their animals fit and ready to go by 5pm on Friday, August 12th. Buyers will be arriving shortly before 5pm. Auction participants check with the Livestock Committee for procedures regarding entering and exiting the sales ring. Please have your animal and yourself ready to talk with buyers by 5pm.

Carcass Show

The Carcass Show will be held August 24th at the Spring Valley High School, at 7:30 p.m. Everyone will receive their ribbons and oral reasons will be given by the judge. Anyone having a carcass animal needs to attend that evening in order to receive his or her premium. Please bring a thank you note with an addressed envelope for your buyer and contending bidder to the Carcass Show in order to get your check.

Notes from the Pierce County Fair Office – July 2022

Animal Bedding

Animal Exhibitors are required to bring your own bedding. Due to space constraints bring only what you will be using.

Animal Care at the Fair

Safe, clean transportation must be provided (make sure that all trailers are kept clean and extremely safe.) Biosecurity is everyone's concern.

- Wash your animals at home first. Do not bring dirty animals to the fair.
- Animals are WELL TRAINED and (if applicable) HALTER BROKEN.
- Clean, fresh water is available for all animals.
- Manure/ waste is promptly disposed of. Keep bunker area clean, also around barn and to and from milking parlor.
- Each animal is housed with adequate space AND feed is provided for all of the animals!
- Adequate animal washing, preparation and showing techniques are followed throughout the show day. (Make sure blocking and grooming chutes are safe and clean and will not cause injury to the animals.) All grooming shoots must be outside the barns. NO shoots allowed in barns.
- Animal show preparation includes no practices that cause undue stress (absolutely no prodding, kicking, whipping, hitting).
- A veterinarian is on call and makes periodic checks of all animals. - Adequate ventilation and protection from severe weather is provided for all animals.

Attention Dairy Exhibitors

A few reminders as you get ready for the fair:

- Check your animal for warts and ringworm. They won't be allowed to stay on the grounds if they have either.
- For warts, pull them off with pliers and give a shot of wart vaccine available from your vet.
- For ringworm see your vet NOW!
- Accurate animal numbers are important. If you have an animal that gets sick or injured after the pen numbers have been called in by your leader, please give Bob Traynor a call at 715-977-0499 before July 31st. The more accurate our numbers are when we measure barn space, the better it is for everyone.
- The Animal ID Form is required this year for each load coming to the Fair page 116 & 118 in the Premium Book or on fair website).
- ***ALL CLIPPING CHUTES MUST BE OUTSIDE! NO EXCEPTIONS! After the shows on Saturday, load the chutes up and move them out of the area.***

Notes from the Pierce County Fair Office – July 2022

Milking Parlor Information

There will be posted hours when the milking parlor is open. Your cooperation is appreciated.

Reminder of early check-in of 3-8 p.m. on Wednesday night; parlor is open Wednesday 5-8 p.m. Parlor clean-up will be at 11:00 p.m. on Saturday night. If you plan to go to the demo derby, either milk your cows before you go or arrange for someone to milk them for you. All of the parlor clean-up is voluntary. Any help with clean-up is welcome. A clean environment not only enhances our fairgoers experience, but speaks to the care your animals receive. Also, please be extremely careful to NOT add TREATED MILK and spoil the load. All necessary precautions must be taken.

Please report number of pounds accurately, we are always over by several hundred pounds each year.

Crossover Animals If same animal is shown in Junior and Open Class Dairy, you must tell the superintendent at check-in and premium will only be awarded in Junior Fair.

Ethics Reminders

Ethics- What is it? - -Knowing what is right from wrong. Moral philosophy and principles that identify actions as acceptable or unacceptable as generally observed by society. One way to help us decide is the black and white ethical compass- it has key questions that you should ask yourself when making a decision in regard to showing animals at the fair.

The questions are:

- Does this practice break Food and Drug Administration (FDA) law?
- Does the practice harm the animal?
- Does it falsely represent the animal?
- Would you need to lie to the judge to cover it up?
- Would consumers be upset if they knew about the practice?
- Does the practice make the animal or by products unmarketable?
- Does the action represent the person you want to be?

Remember that your actions both in and outside of the ring represents both you and the Livestock industry. People notice your actions and judge the whole industry by them! ***The Jr. & Open Dairy Show Ring Policy will be enforced at the fair!*** Please see page 19 in the Premium Book.

Barn Decorations

Barn decorations may be put up on Monday, Tuesday and Wednesday from 2:00 – 9:00 p.m. No decorating in Silver Barn until Tuesday due to show conflict. Decorations can be taken down after 4:30 p.m. on Sunday.

Notes from the Pierce County Fair Office – July 2022

Booth Decorations

4-H CLUB Booth decorations can be put up on Monday, August 8th and Tuesday, August 9th from 8 a.m. to 6:00 p.m. booths are being judged Wednesday. Decorations can be taken down after 4:30 p.m. on Sunday. Nothing is guarded until Wednesday. Individual booths for Self Determined can be set up Monday until 6 p.m. and Tuesday until 1:00 p.m. judging time.

Sunday Barn Clean-Up

The Fairgrounds staff has requested that all animal exhibitors make a special effort to CLEAN UP all stalls, pens and cages before leaving the grounds. All excess manure must be cleaned up or your 4-H club may be charged for cleaning fees.

Prepare for Hot Weather at the Fair

Fans may be a hot commodity during the Fair! If you are working in the Seyforth, Home Ec., Round Barn or the Kenny Hines Memorial Building, you may wish to bring a fan along to help keep you cool.

Pedal Pull & other activities

Thursday, August 12th at 6:30 p.m. - PEDAL TRACTOR PULL. This event will be held east of the Seyforth Building with registration starting at 6:00 p.m. that day. Age brackets begin at age 4. Be sure to bring mom or dad with you to sign up as a waiver form will be necessary to sign. Also age brackets may be limited to the number of participants.

Annual Talent Show

It's that time of year to sign-up for the Pierce County Fair Talent show. The talent show preliminaries will be held beginning at 6:30 p.m. Thursday, August 11th in the Picnic Shelter. The contact for participants from all cities in Pierce and St. Croix Counties is Call Peg Krasin 715-425-2670 or email peggy.krasin@comcast-net for entry. Call the Fair office or the contact above for more information.

• ROCKET LAUNCH WILL BE TUESDAY, AUGUST 10TH AT 7:00 P.M.! • Fireworks, Thursday at dusk • Talent Show Thursday night @ 6:30 p.m. • Pedal Tractor Pull Thursday night at 6:30 • Senior Citizen Day is Friday - \$2 if 62+ • TRUCK + TRACTOR Pull Friday night at 6:30 • Veterans Day is FREE on Sunday • ANIMAL SCRAMBLE WILL BE SUNDAY AT NOON!

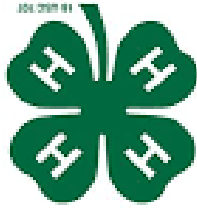
Ag Olympics - Thursday - August 11 - at 8pm in the Grandstand. Contact Deanna Hines for more details on forming teams.

Any Questions for Fair Office

If you have questions, call Liz at 715-273-6874 or email her at liz.dietsche@co.pierce.wi.us.

Or visit the website <https://www.co.pierce.wi.us/departments/fair/index.php> Like the Pierce County Fair on Facebook - Pierce County Fair and Fairgrounds WI Instagram - piercecountyfairwi

University of Wisconsin - Extension
Pierce County Office
PO Box 69
432 Main Street
Ellsworth, WI 54011
Phone: (715) 273-6781



AUGUST INFORMANT FAIR EDITION



Extension
UNIVERSITY OF WISCONSIN-MADISON
PIERCE COUNTY

The University of Wisconsin-Extension provides Title IX requirements, which include affirmative action and equal opportunity in education, programming and employment for all qualified persons regardless of race, color, gender, disability, religion, national origin, ancestry, age, sexual orientation, pregnancy, marital or parental status, arrest or conviction record or veteran status.
Requests for reasonable accommodations for disabilities or limitations should be made prior to the date of the program or activity for which it is needed. Please do so as early as possible prior to the program or activity so that proper arrangements can be made. Requests are confidential (ADA requirements).